

WALL DETAILS INDEX: HORIZONTAL SECTION



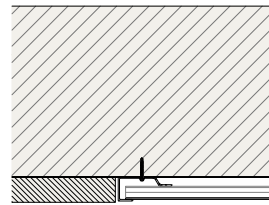
AL13® Architectural Systems
1278 Cliveden Avenue, V6M
6G4 Delta, BC - Canada

TEL. +1(604) 428-2513 MAIL
info@al13.com
www.al13.com

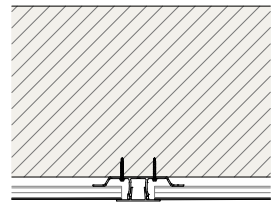
NOTE:

The contractor / builder must verify all dimensions on the job and report any discrepancy to the designer before proceeding with the work. All drawings and specifications are instruments of service and the copyright property of the designer and must be returned upon request.

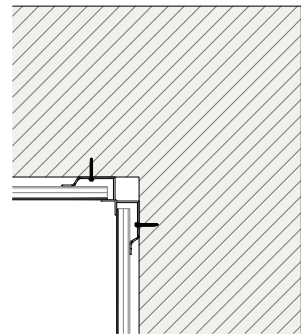
Detail 1a // Page 02



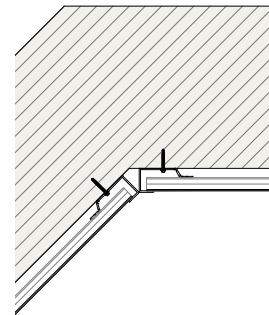
Detail 2 // Page 03



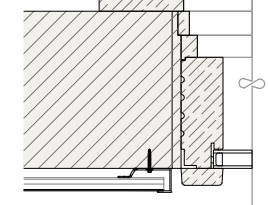
Detail 3 // Page 04



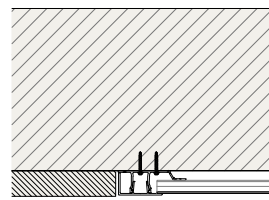
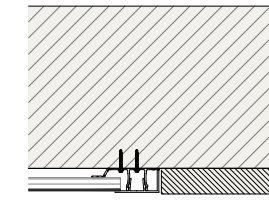
Detail 6 // Page 07



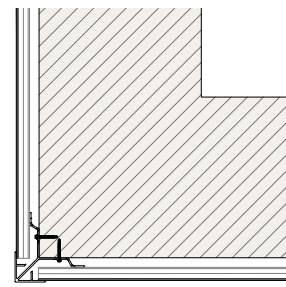
Detail 7 // Page 08



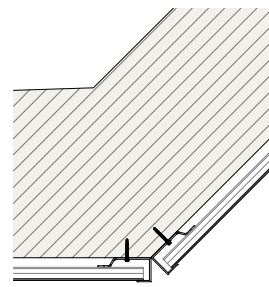
Detail 9 // Page 9



Detail 1b // Page 02

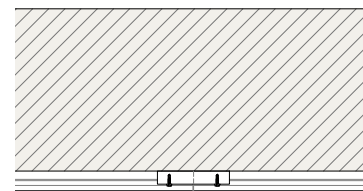


Detail 4 // Page 05

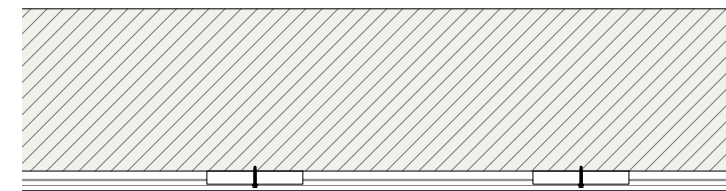


Detail 5 // Page 06

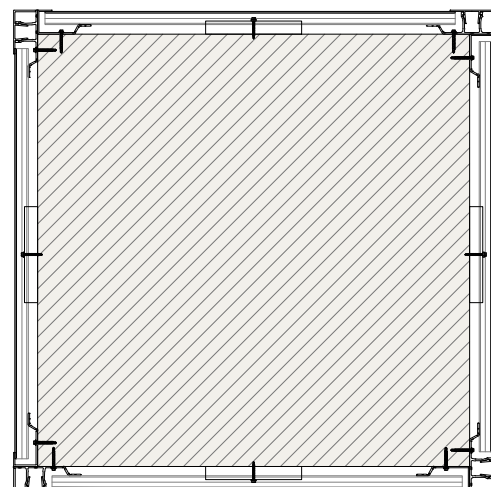
Detail 8 // Page 03



Detail 13 // Page 03



Detail 10 // Page 10



AL13® Plank System Details

Plank System
4" Plank / 6" Plank

DESCRIPTION:
**HORIZONTAL SECTION
WALL DETAILS**

SCALE:
--

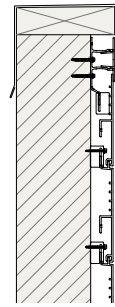
DATE:
20 Apr. 2020

DRAWING
NUMBER:

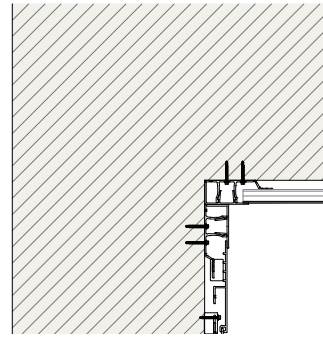
A

WALL DETAILS INDEX: VERTICAL SECTIONS

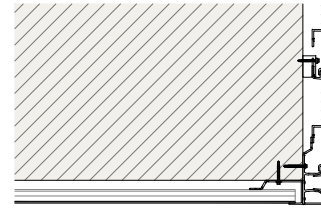
Detail 21 // Page 22



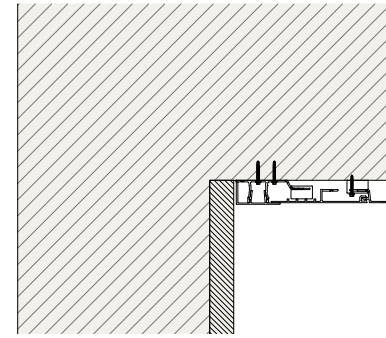
Detail 15b // Page 16



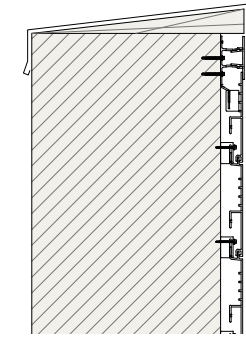
Detail 16b // Page 17



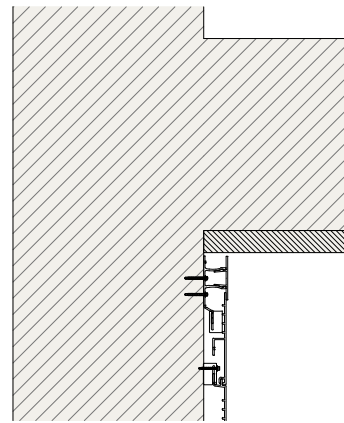
Detail 22 // Page 23



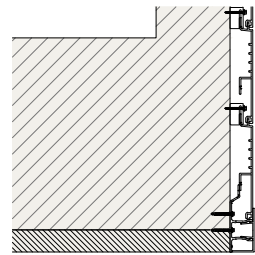
Detail 17 // Page 18



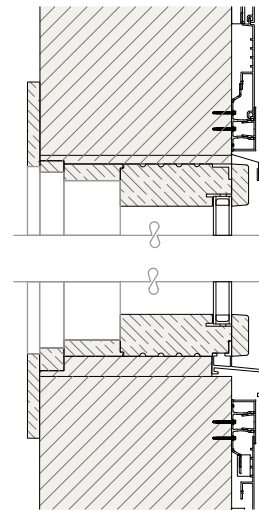
Detail 19 // Page 20



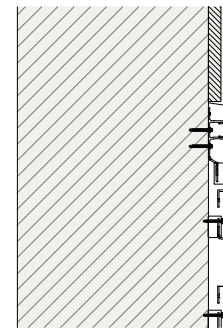
Detail 20 // Page 21



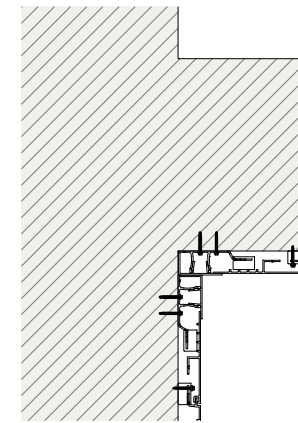
Detail 12a // Page 8



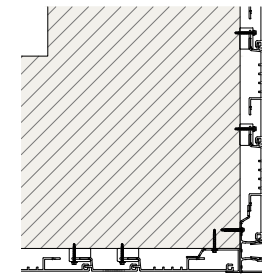
Detail 18 // Page 19



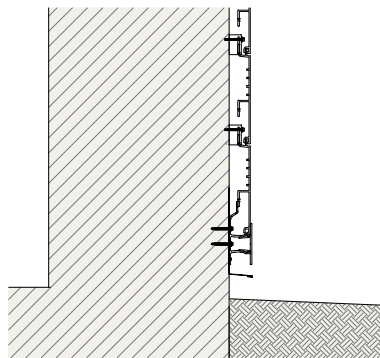
Detail 15a // Page 15



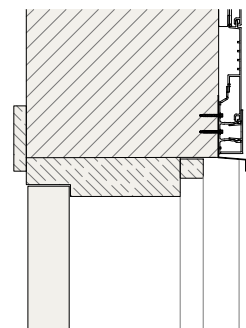
Detail 16a // Page 17



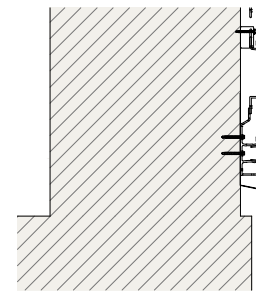
Detail 11a // Page 11



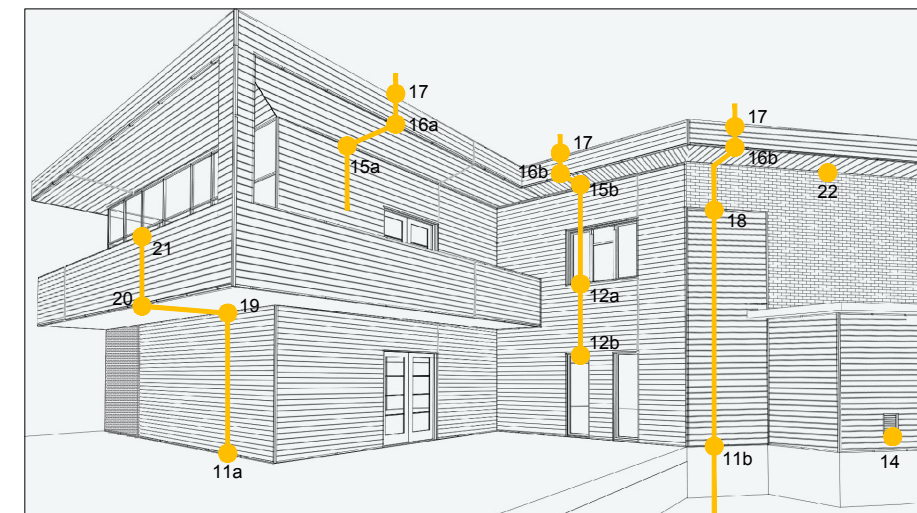
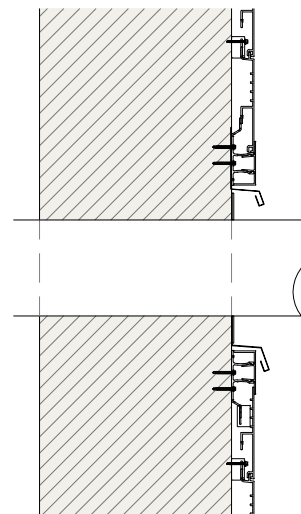
Detail 12b // Page 13



Detail 11b // Page 12



Detail 14 // Page 14



AL13® Architectural Systems
1278 Cliveden Avenue, V6M
6G4 Delta, BC - Canada

TEL. +1(604) 428-2513 MAIL
info@al13.com
www.al13.com

NOTE:

The contractor / builder must verify all dimensions on the job and report any discrepancy to the designer before proceeding with the work. All drawings and specifications are instruments of service and the copyright property of the designer and must be returned upon request.

AL13® Plank System Details

Plank System
4" Plank / 6" Plank

DESCRIPTION:
**VERTICAL SECTION
WALL DETAILS**

SCALE:
--

DATE:
20 Apr. 2020

DRAWING
NUMBER:

B



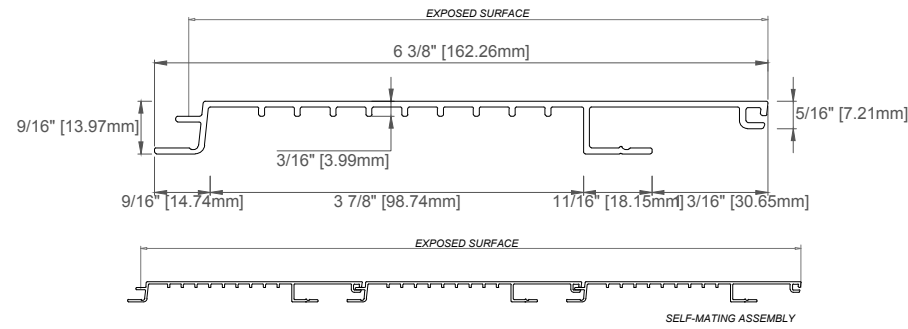
AL13® Architectural Systems
1278 Cliveden Avenue, V6M
6G4 Delta, BC - Canada

TEL: +1(604) 428-2513 MAIL
info@al13.com
www.al13.com

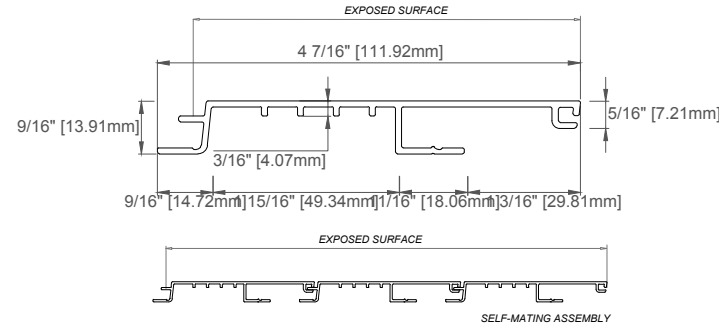
NOTE:

The contractor / builder must verify all dimensions on the job and report any discrepancy to the designer before proceeding with the work. All drawings and specifications are instruments of service and the copyright property of the designer and must be returned upon request.

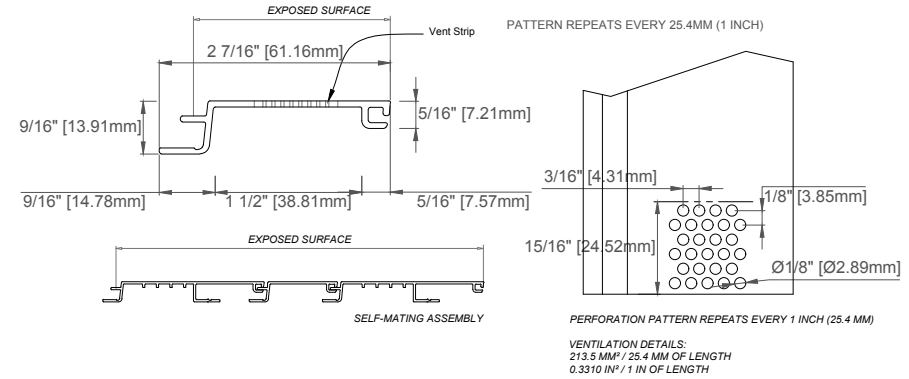
6P - 6" PLANK (COATED)



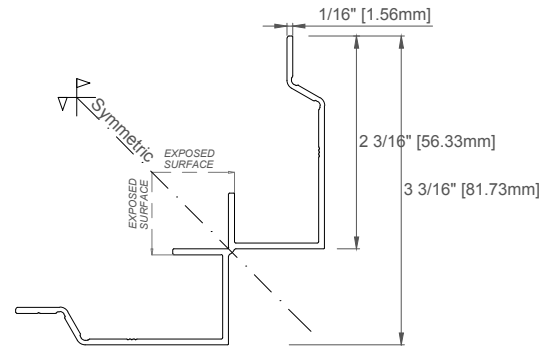
4P - 4" PLANK (COATED)



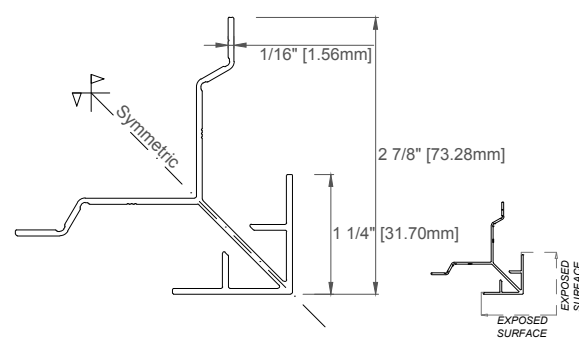
2PV - 2" PLANK VENT STRIP (COATED)



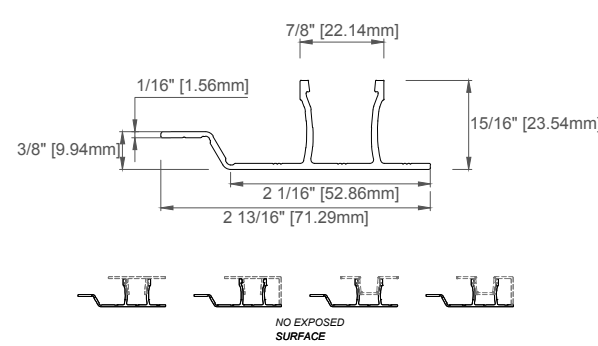
IC-12 - INSIDE CORNER (COATED)



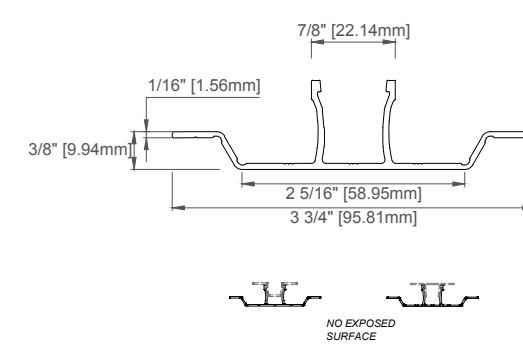
OC-12 - OUTSIDE CORNER (COATED)



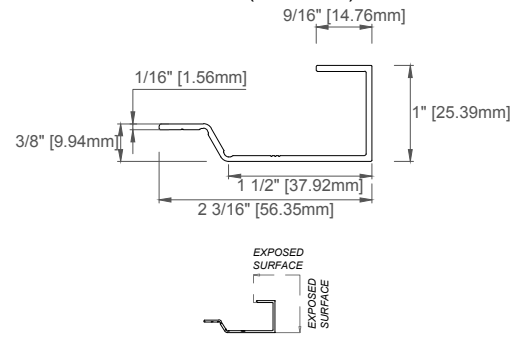
BPH-8 - BACK PLATE HALF (ANODIZED)



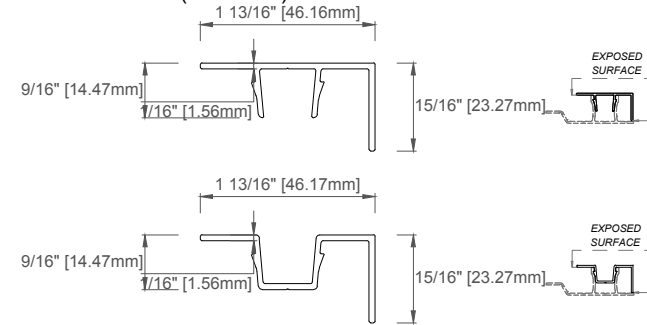
BP-8 - BACK PLATE (ANODIZED)



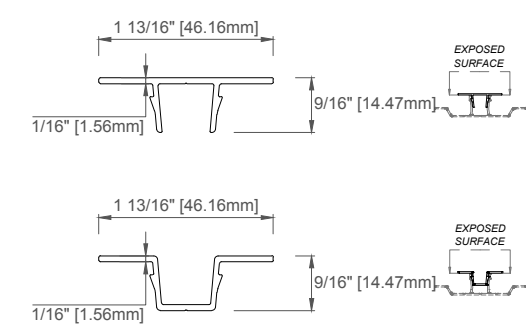
EF-12 - END FRAME (COATED)



FCP-12 - FLAT CAP PERIMETER & RCP-12 - REVEAL CAP PERIMETER (COATED)



FC-12 - FLAT CAP & RC-12 - REVEAL CAP (COATED)



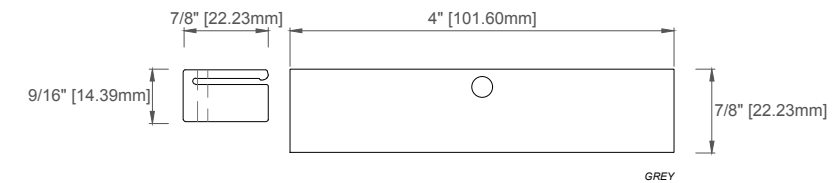
SYSTEM CLIP FASTENERS

	F1.75 - to Wood substrate	F1.50 - to Steel Substrate
Specification	#12- 14 x 44.45mm (1 1/4 inch) mini drill-point fasteners with EPDM composite washers and corrosion-resistant coating. Installed every 81.28cm (32 inches) on center. Acceptable Materials: #12-14 x 1 1/4 inch AL13® Hex-Head Fastener, coated with mini drill-point.	#12-14 x 38mm (1 1/2 inch) drill-point fasteners with EPDM composite washers and corrosion-resistant coating. Installed every 81.28cm (32 inches) on center. Acceptable Materials: #12-14 x 1 1/2 inch AL13® Hex-Head Fastener, coated with drill-point.

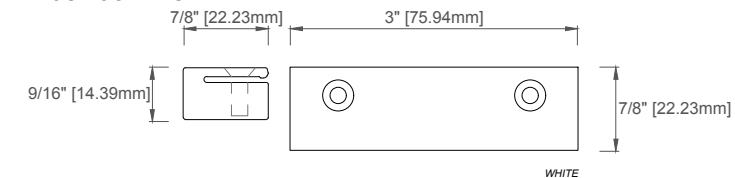
FRAME COMPONENT FASTENERS

	F0.75 - to Steel Substrate	F1.50 - to Wood Substrate
Specification	#10-16 x 19.05mm (3/4 inch) self-drilling screws with corrosion-resistant coating. Installed every 60.96cm (24 inches) on center. Acceptable Materials: #10-16 x 3/4 inch AL13® Hex-Head Fastener, coated with drill-point.	#12-14 x 38mm (1 1/2 inch) mini drill-point fasteners with EPDM composite washers and corrosion-resistant coating. Installed every 40.64cm (16 inches) on center, unless securing a segmented (8.25cm) (3 1/4 inch) backplate (installed 40.64cm (16 inches) on center), in which case two fasteners per segmented piece are required. Acceptable Materials: #12-14 x 1 1/2 inch AL13® Hex-Head Fastener, coated with mini drill-point.

SCP - SYSTEM CLIP



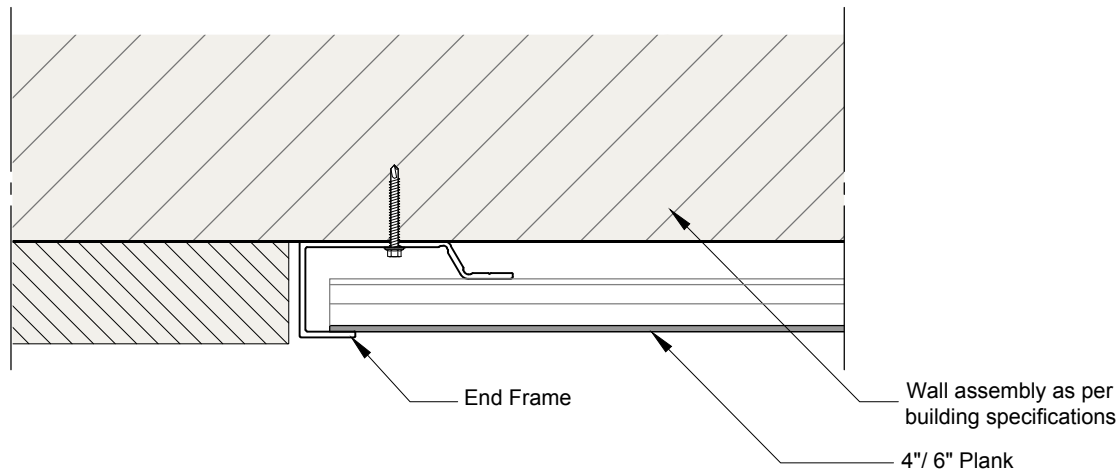
JC - JOINT CLIP



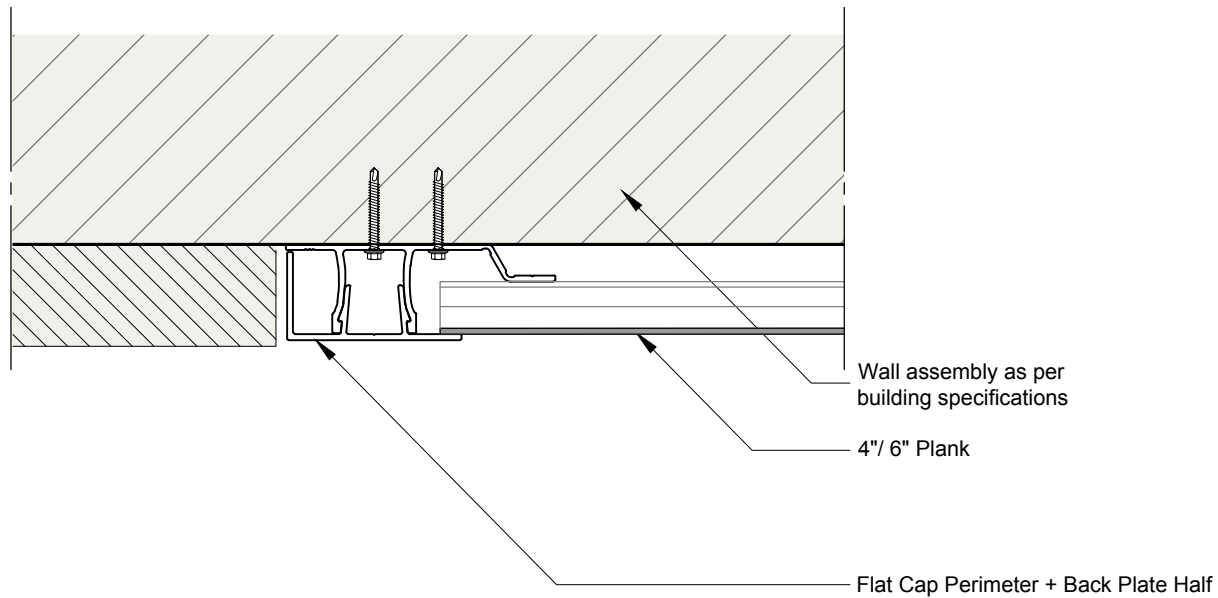
DESCRIPTION:
GENERIC DETAIL
EXTRUSIONS AND CLIPS

SCALE:
--
DATE:
20 Apr. 2020

DRAWING NUMBER:
01

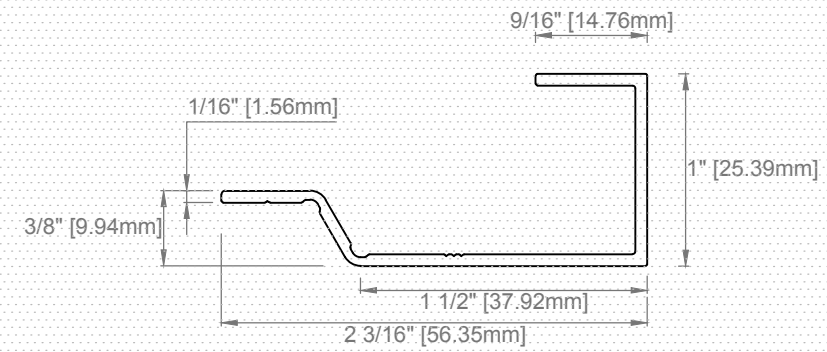


1a End of the wall - Vertical Transition (Option A)
Scale 2"=1'-0"

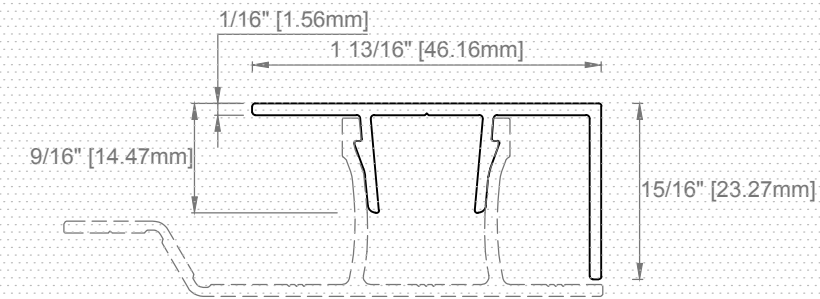


1b End of the wall - Vertical Transition (Option B)
Scale 2"=1'-0"

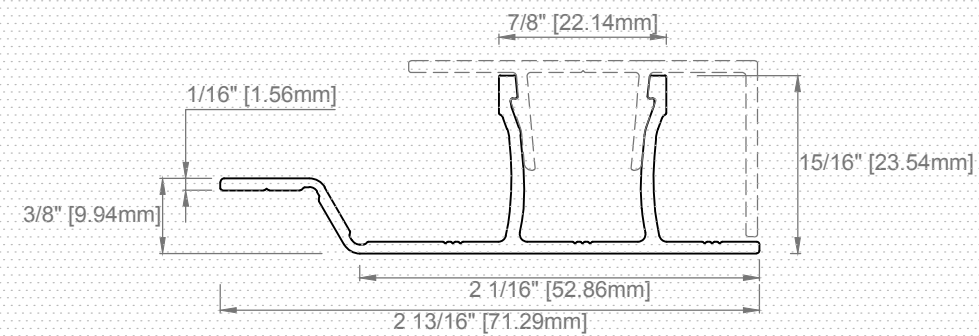
EXTRUSIONS USED IN THE EXAMPLE



EF-12 End Frame
Scale 1"=1'-0"



FCP-12 Flat Cap Perimeter
Scale 1"=1'-0"



BPH-8 Back Plate Half
Scale 1"=1'-0"



AL13® Architectural Systems
1278 Cliveden Avenue, V6M
6G4 Delta, BC - Canada

TEL. +1(604) 428-2513 MAIL
info@al13.com
www.al13.com

NOTE:

The contractor / builder must verify all dimensions on the job and report any discrepancy to the designer before proceeding with the work. All drawings and specifications are instruments of service and the copyright property of the designer and must be returned upon request.

AL13® Plank System Details

Plank System
4" Plank / 6" Plank

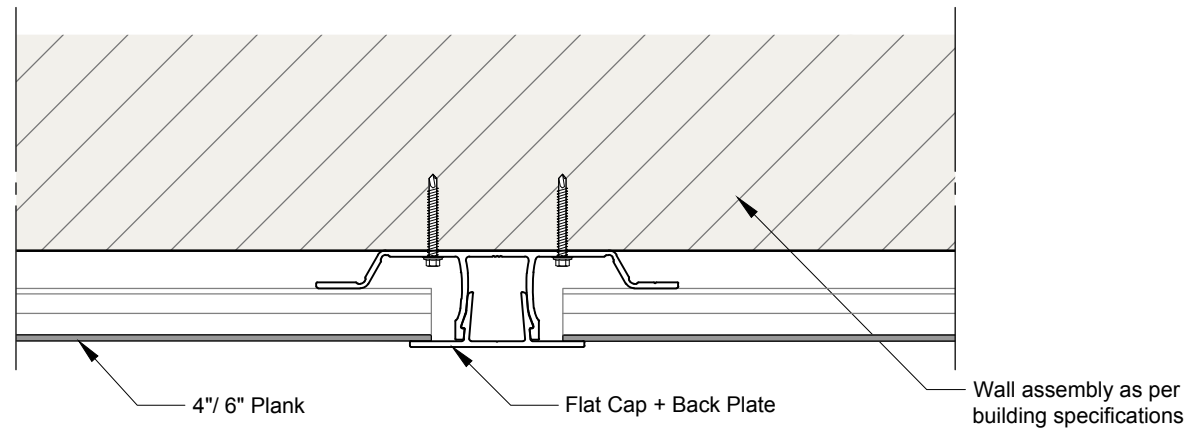
DESCRIPTION:
GENERIC DETAIL
END OF THE WALL - VERTICAL TRANSITION

SCALE:
As noted

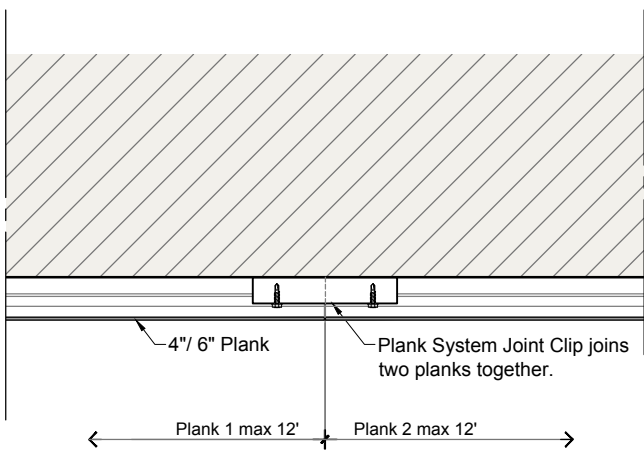
DATE:
20 Apr. 2020

DRAWING NUMBER:

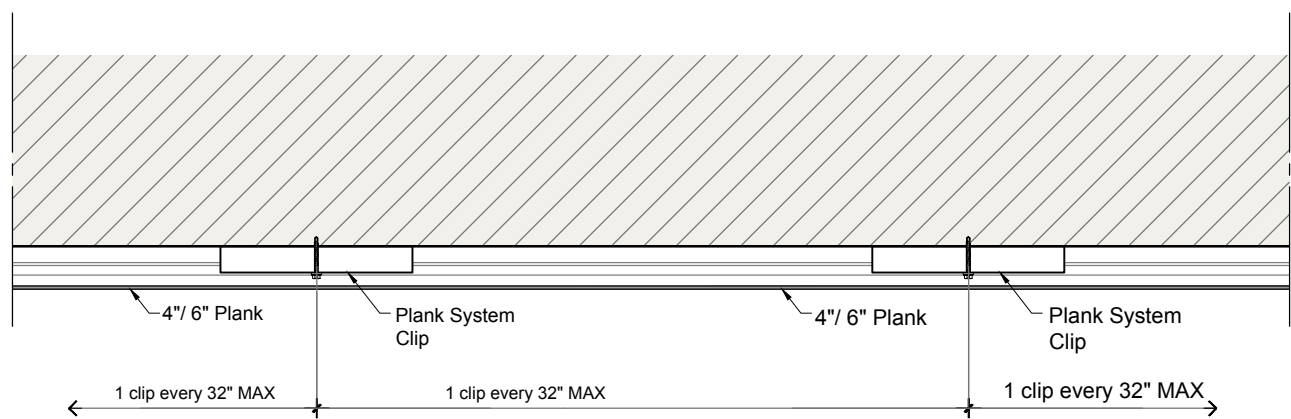
02



2 Vertical brake every 24'
Scale 2"=1'-0"

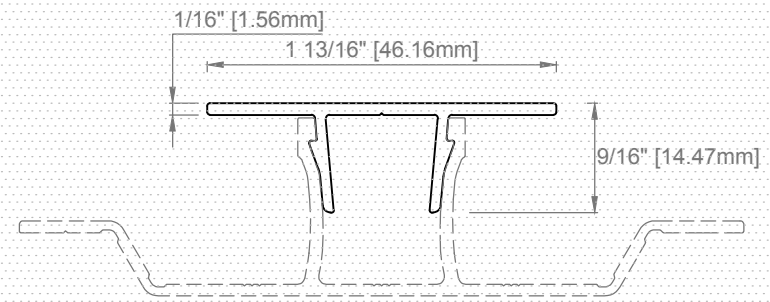


8 Connection between planks
Scale 4"=1'-0"

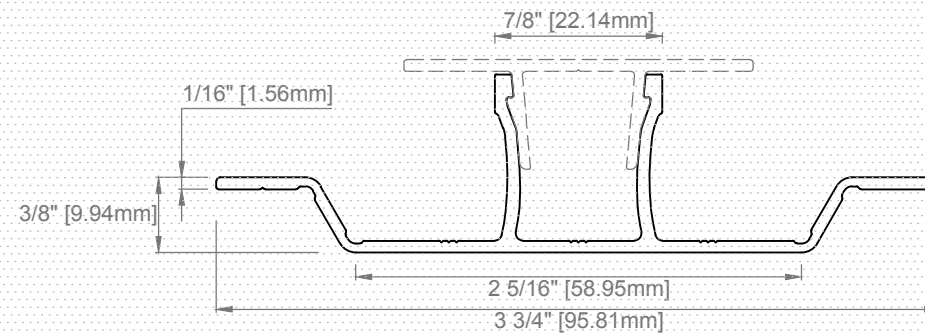


13 System Clips
Scale 4"=1'-0"

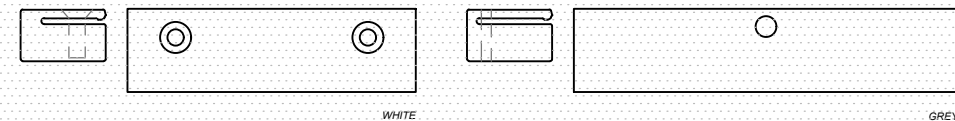
EXTRUSIONS USED IN THE EXAMPLE



FC-12 Flat Cap
Scale 1"=1'-0"



BP-8 Back Plate
Scale 1"=1'-0"



JC Plank Joint Clip
Scale 2"=1'-0"

SCP Plank System Clip
Scale 2"=1'-0"



AL13[®] Architectural Systems
1278 Cliveden Avenue, V6M
6G4 Delta, BC - Canada

TEL. +1(604) 428-2513 MAIL
info@al13.com
www.al13.com

NOTE:

The contractor / builder must verify all dimensions on the job and report any discrepancy to the designer before proceeding with the work. All drawings and specifications are instruments of service and the copyright property of the designer and must be returned upon request.

AL13[®] Plank System Details

Plank System
4" Plank / 6" Plank

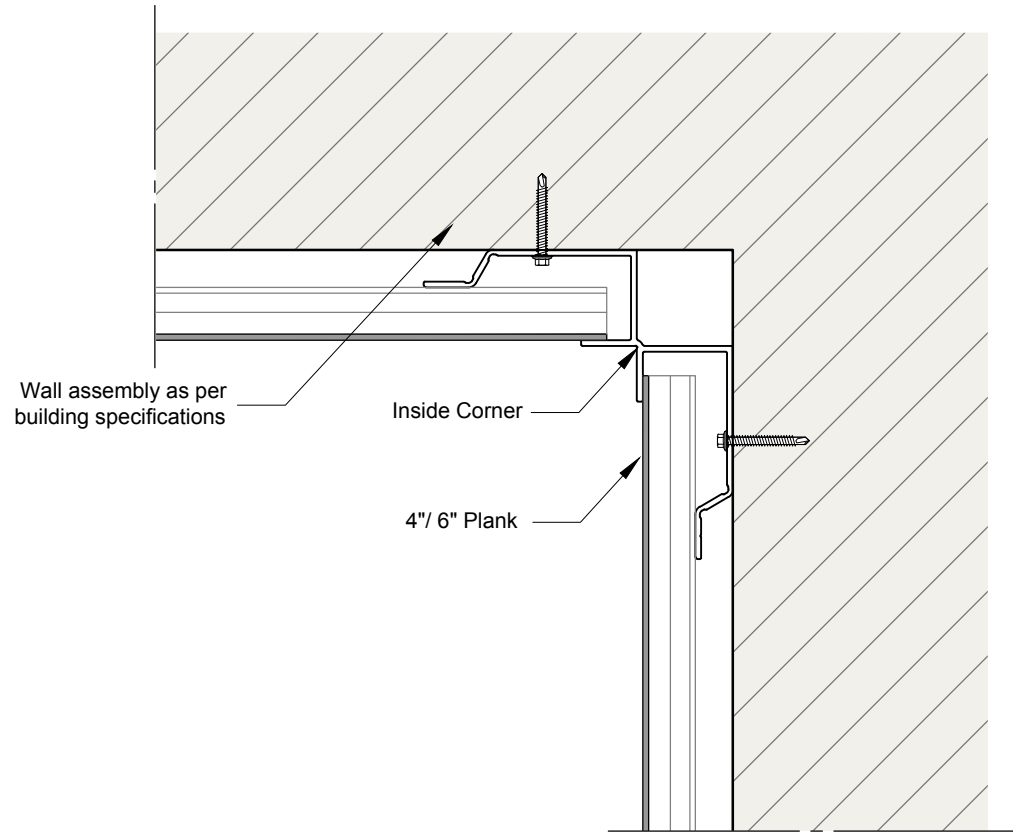
DESCRIPTION:
GENERIC DETAIL
PLANK CONNECTIONS

SCALE:
As noted

DATE:
20 Apr. 2020

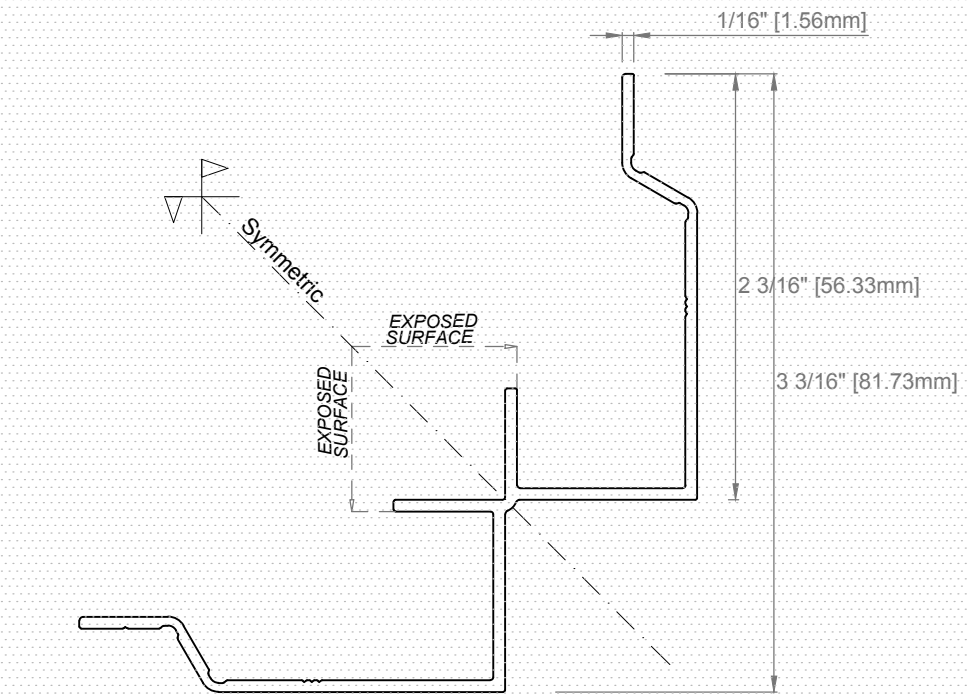
DRAWING
NUMBER:

03



3 Inside Corner - 90°
Scale 2"=1'-0"

EXTRUSIONS USED IN THE EXAMPLE



IC-12 Inside Corner
Scale 1"=1'-0"



AL13® Architectural Systems
1278 Cliveden Avenue, V6M
6G4 Delta, BC - Canada

TEL. +1(604) 428-2513 MAIL
info@al13.com
www.al13.com

NOTE:

The contractor / builder must verify all dimensions on the job and report any discrepancy to the designer before proceeding with the work. All drawings and specifications are instruments of service and the copyright property of the designer and must be returned upon request.

AL13® Plank System Details

Plank System
4" Plank / 6" Plank

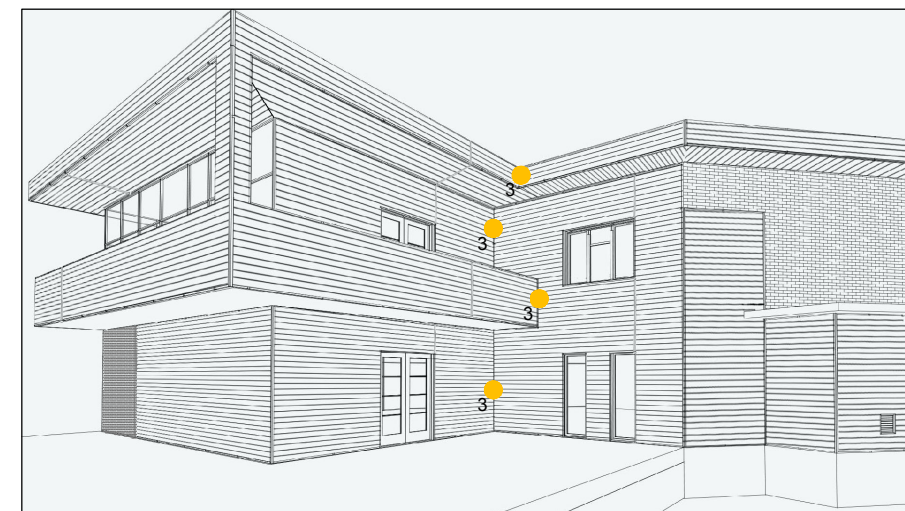
DESCRIPTION:
**GENERIC DETAIL
INSIDE CORNER 90°**

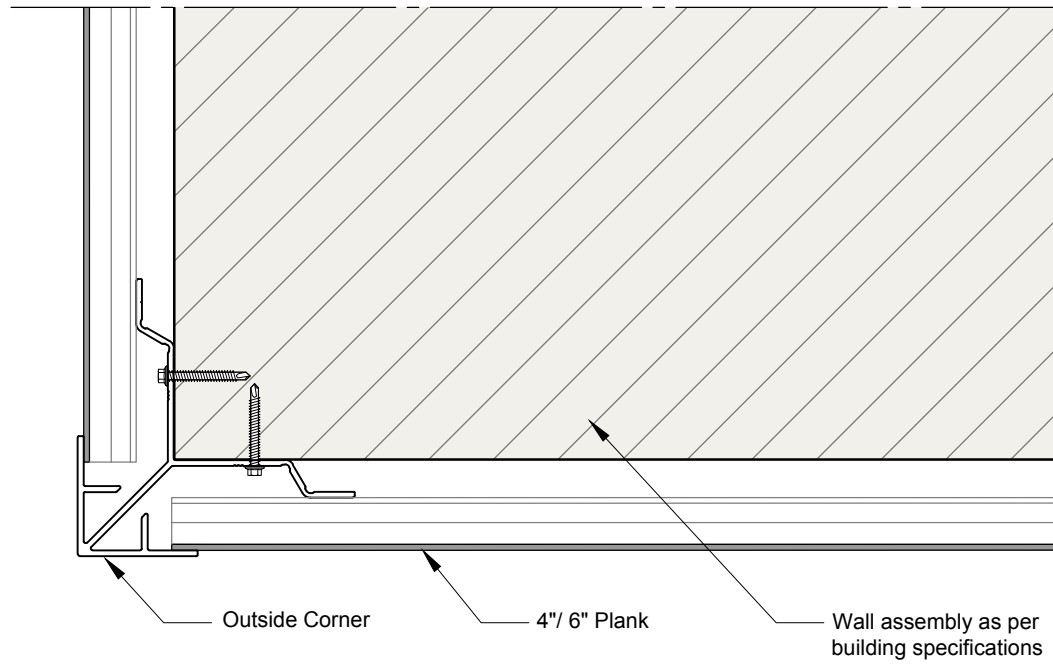
SCALE:
As noted

DATE:
20 Apr. 2020

DRAWING
NUMBER:

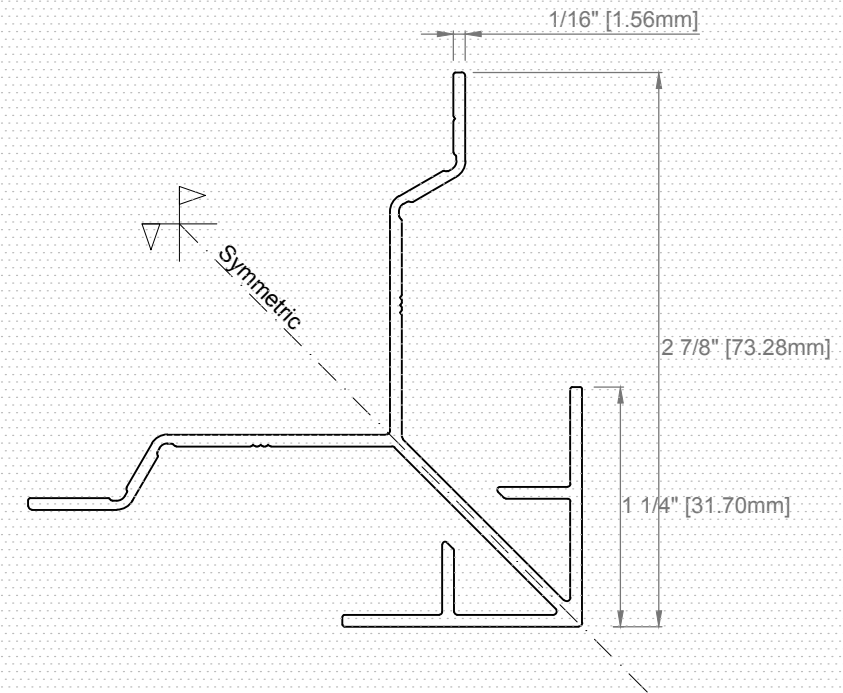
04





4 Outside Corner - 90°
Scale 2"=1'-0"

EXTRUSIONS USED IN THE EXAMPLE



OC-12 Outside Corner
Scale 1"=1'-0"



AL13® Architectural Systems
1278 Cliveden Avenue, V6M
6G4 Delta, BC - Canada

TEL. +1(604) 428-2513 MAIL
info@al13.com
www.al13.com

NOTE:
The contractor / builder must verify all dimensions on the job and report any discrepancy to the designer before proceeding with the work. All drawings and specifications are instruments of service and the copyright property of the designer and must be returned upon request.

AL13® Plank System Details

Plank System
4" Plank / 6" Plank

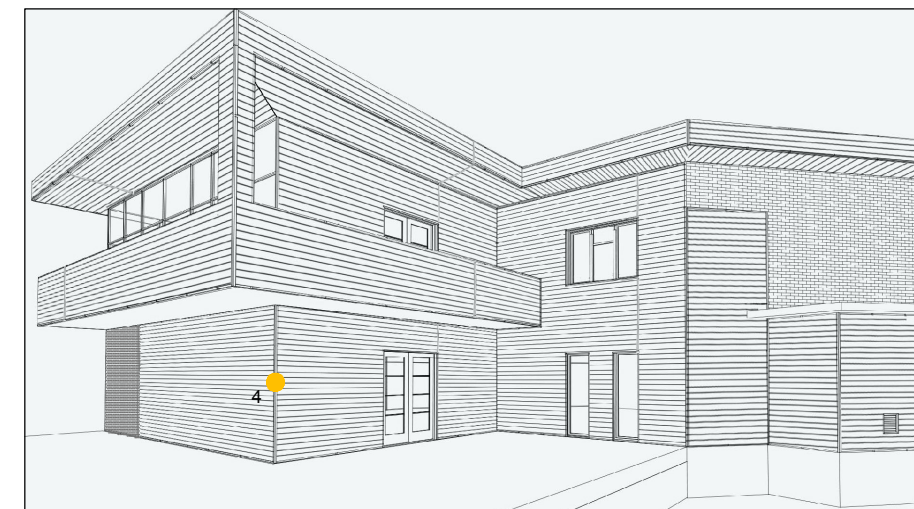
DESCRIPTION:
GENERIC DETAIL
OUTSIDE CORNER 90°

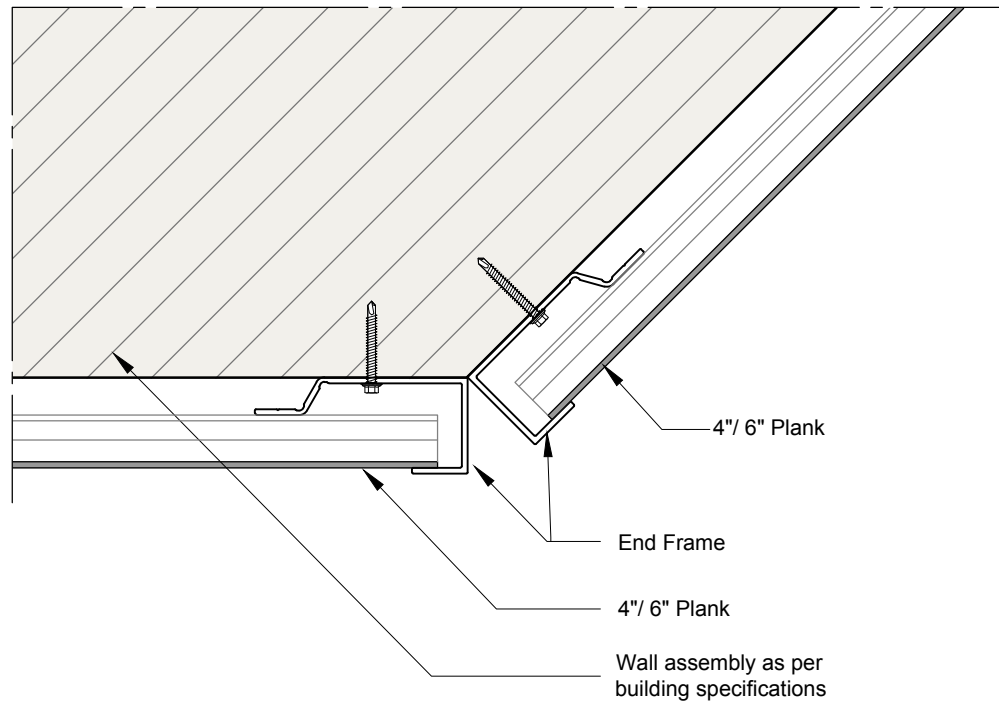
SCALE:
As noted

DATE:
20 Apr. 2020

DRAWING NUMBER:

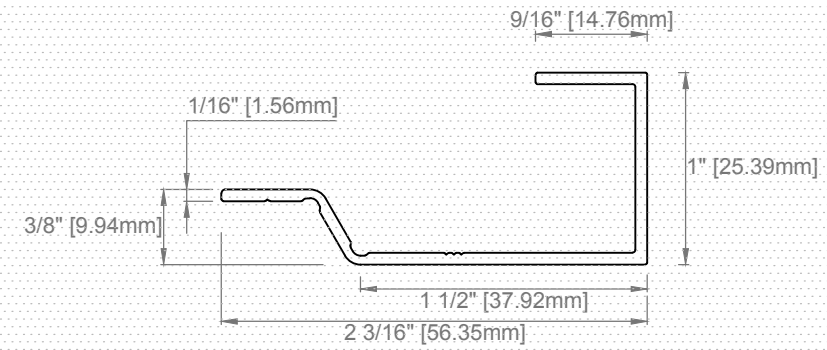
05





5 Outside Corner - Not 90°
Scale 2"=1'-0"

EXTRUSIONS USED IN THE EXAMPLE



EF-12 End Frame
Scale 1"=1'-0"



AL13® Architectural Systems
1278 Cliveden Avenue, V6M
6G4 Delta, BC - Canada

TEL: +1(604) 428-2513 MAIL
info@al13.com
www.al13.com

NOTE:

The contractor / builder must verify all dimensions on the job and report any discrepancy to the designer before proceeding with the work. All drawings and specifications are instruments of service and the copyright property of the designer and must be returned upon request.

AL13® Plank System Details

Plank System
4" Plank / 6" Plank

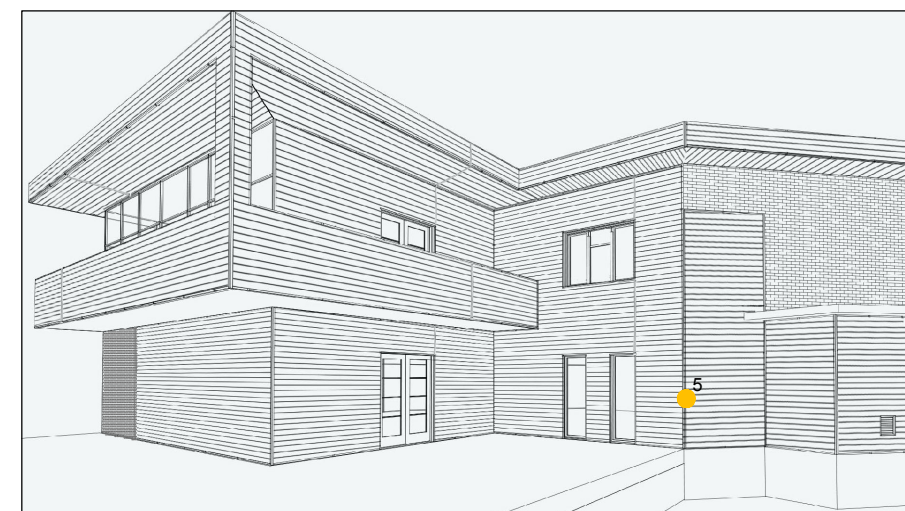
DESCRIPTION:
**GENERIC DETAIL
OUTSIDE CORNER
NOT 90°**

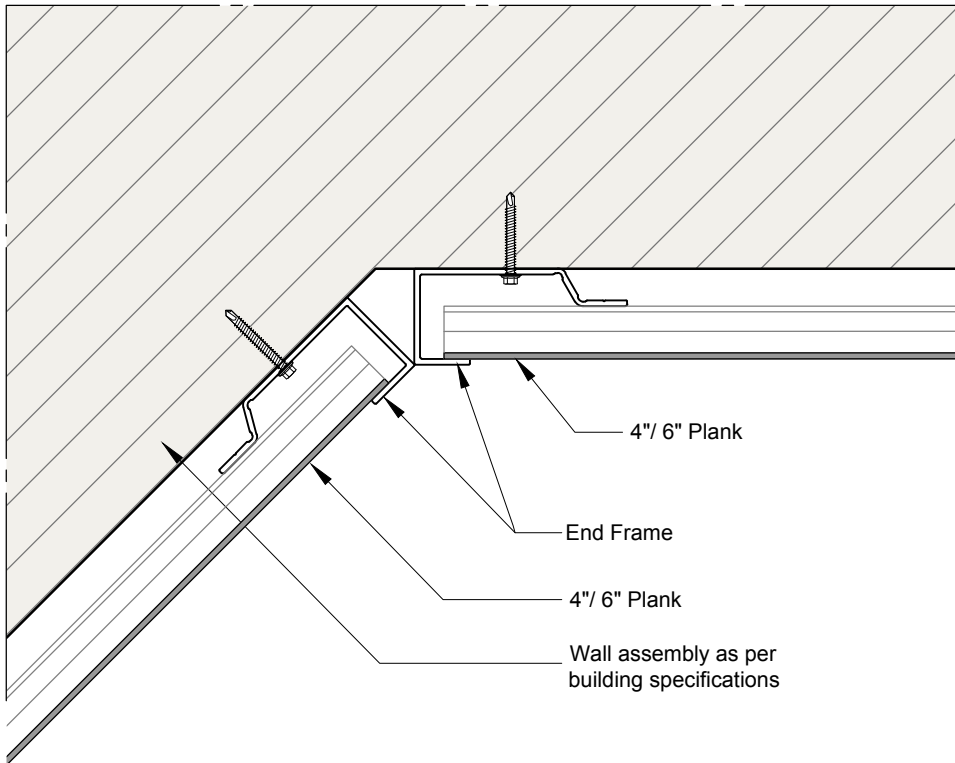
SCALE:
As noted

DATE:
20 Apr. 2020

DRAWING
NUMBER:

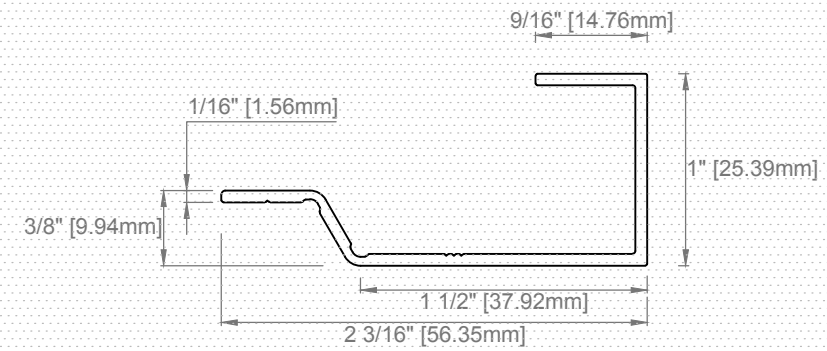
06





6 Inside Corner - Not 90°
Scale 2"=1'-0"

EXTRUSIONS USED IN THE EXAMPLE



EF-12 End Frame
Scale 1"=1'-0"



AL13® Architectural Systems
1278 Cliveden Avenue, V6M
6G4 Delta, BC - Canada

TEL. +1(604) 428-2513 MAIL
info@al13.com
www.al13.com

NOTE:

The contractor / builder must verify all dimensions on the job and report any discrepancy to the designer before proceeding with the work. All drawings and specifications are instruments of service and the copyright property of the designer and must be returned upon request.

AL13® Plank
System Details

Plank System
4" Plank / 6" Plank

DESCRIPTION:
**GENERIC DETAIL
INSIDE CORNER
NOT 90°**

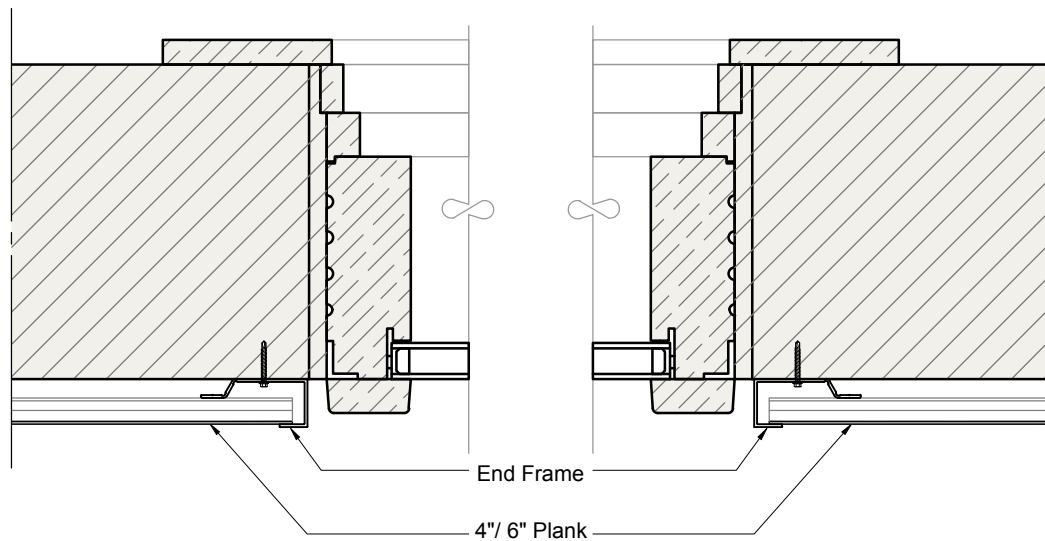
SCALE:
As noted

DATE:
20 Apr. 2020

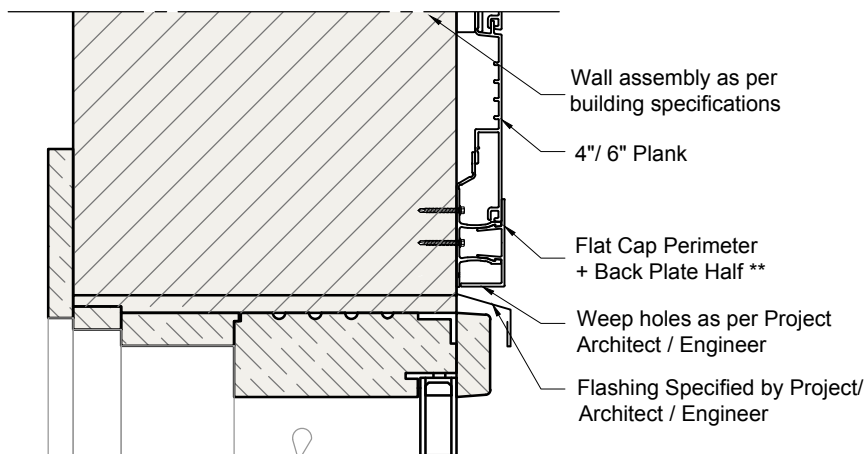
DRAWING
NUMBER:

07





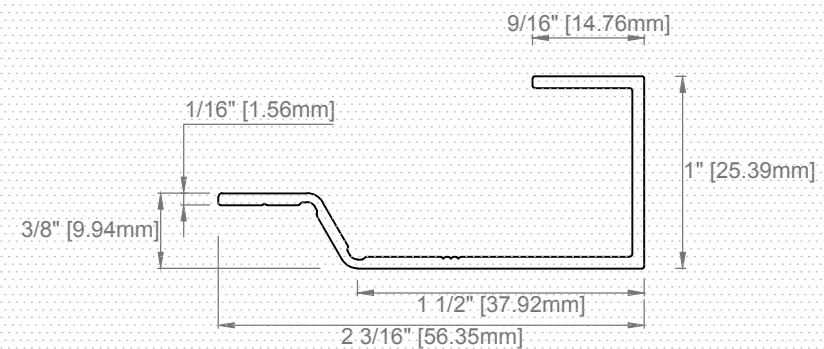
07 Around the window - left and right side
Scale 4"=1'-0"



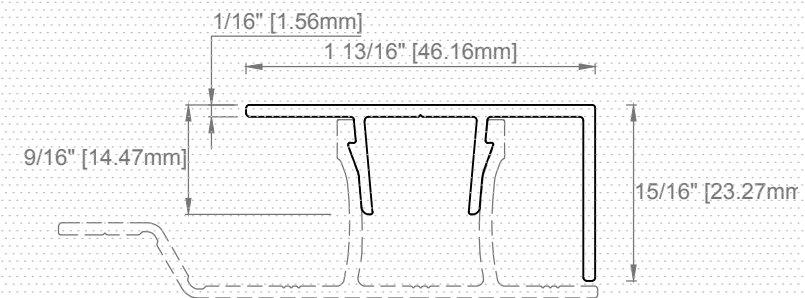
12a Around the window - top and bottom
Scale 4"=1'-0"

** Measure and cut horizontal Back Plate in 3.25" segments and install them every 16"; for vertical Back Plate allow approximately 2" gap from horizontal extrusions.

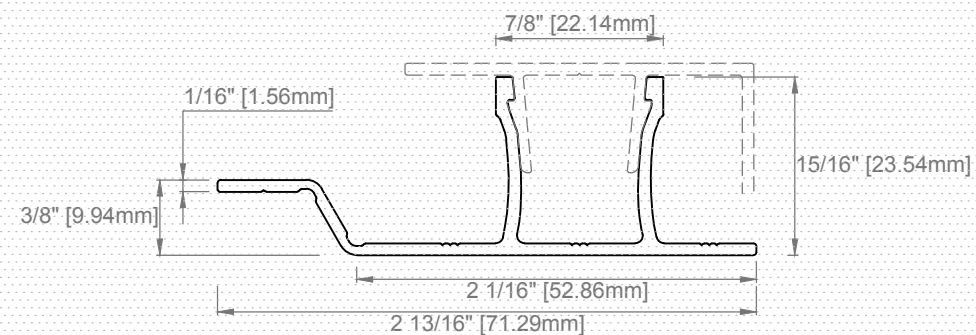
EXTRUSIONS USED IN THE EXAMPLE



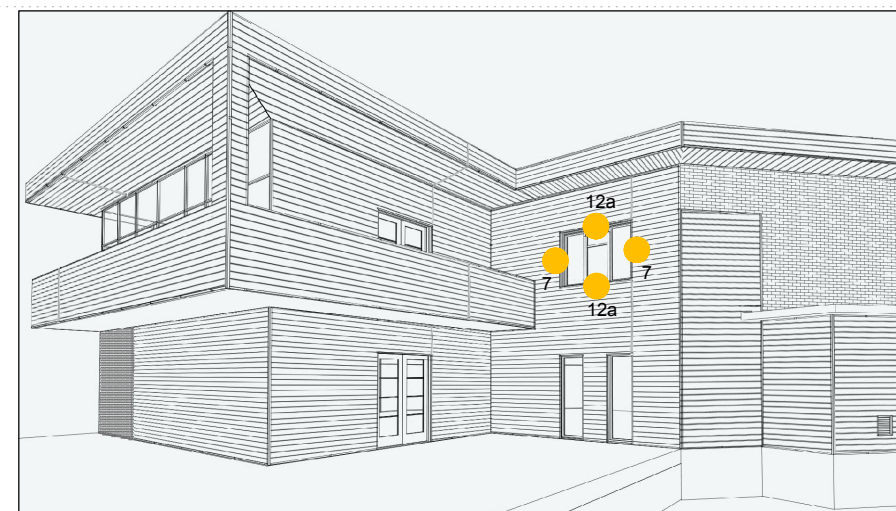
EF-12 End Frame
Scale 1"=1'-0"



FCP-12 Flat Cap Perimeter
Scale 1"=1'-0"



BPH-8 Back Plate Half
Scale 1"=1'-0"



AL13[®] Architectural Systems
1278 Cliveden Avenue, V6M
6G4 Delta, BC - Canada

TEL. +1(604) 428-2513 MAIL
info@al13.com
www.al13.com

NOTE:

The contractor / builder must verify all dimensions on the job and report any discrepancy to the designer before proceeding with the work. All drawings and specifications are instruments of service and the copyright property of the designer and must be returned upon request.

AL13[®] Plank System Details

Plank System
4" Plank / 6" Plank

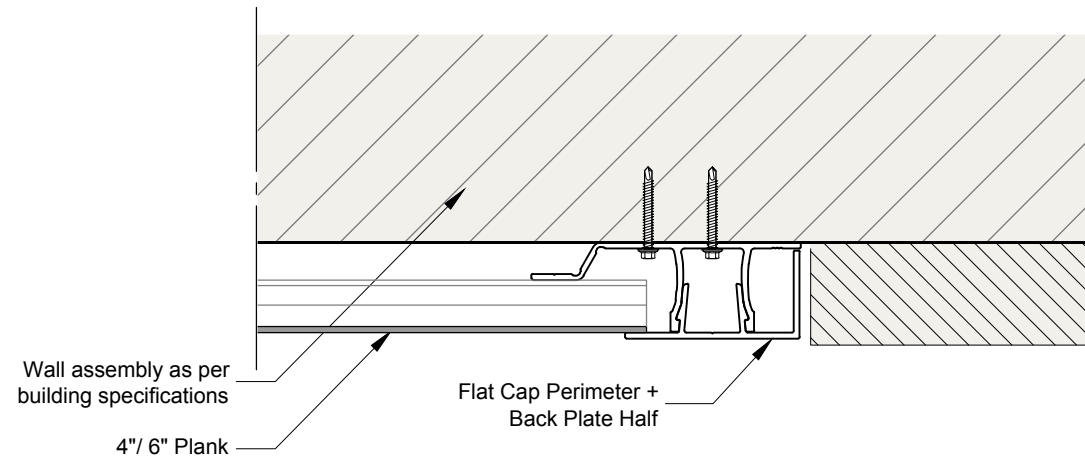
DESCRIPTION:
**GENERIC DETAIL
AROUND THE WINDOW**

SCALE:
As noted

DATE:
20 Apr. 2020

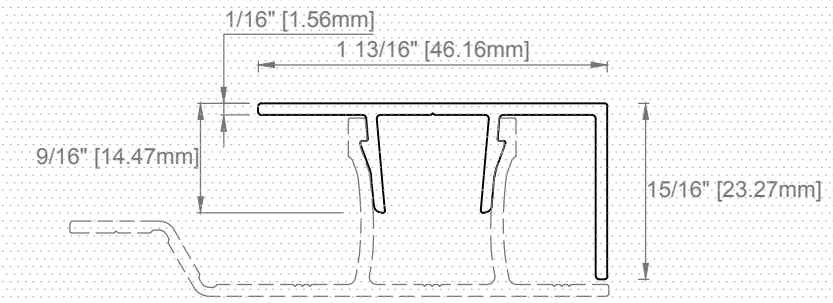
DRAWING
NUMBER:

08

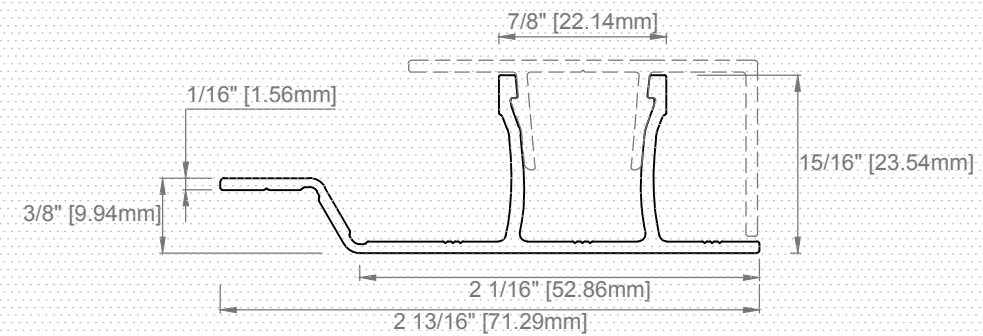


9 End of the wall - Vertical Transition
Scale 2"=1'-0"

EXTRUSIONS USED IN THE EXAMPLE



FCP-12 Flat Cap Perimeter
Scale 1"=1'-0"



BPH-8 Back Plate Half
Scale 1"=1'-0"



AL13® Architectural Systems
1278 Cliveden Avenue, V6M
6G4 Delta, BC - Canada

TEL. +1(604) 428-2513 MAIL
info@al13.com
www.al13.com

NOTE:

The contractor / builder must verify all dimensions on the job and report any discrepancy to the designer before proceeding with the work. All drawings and specifications are instruments of service and the copyright property of the designer and must be returned upon request.

AL13® Plank System Details

Plank System
4" Plank / 6" Plank

DESCRIPTION:
GENERIC DETAIL
END OF THE WALL - VERTICAL TRANSITION

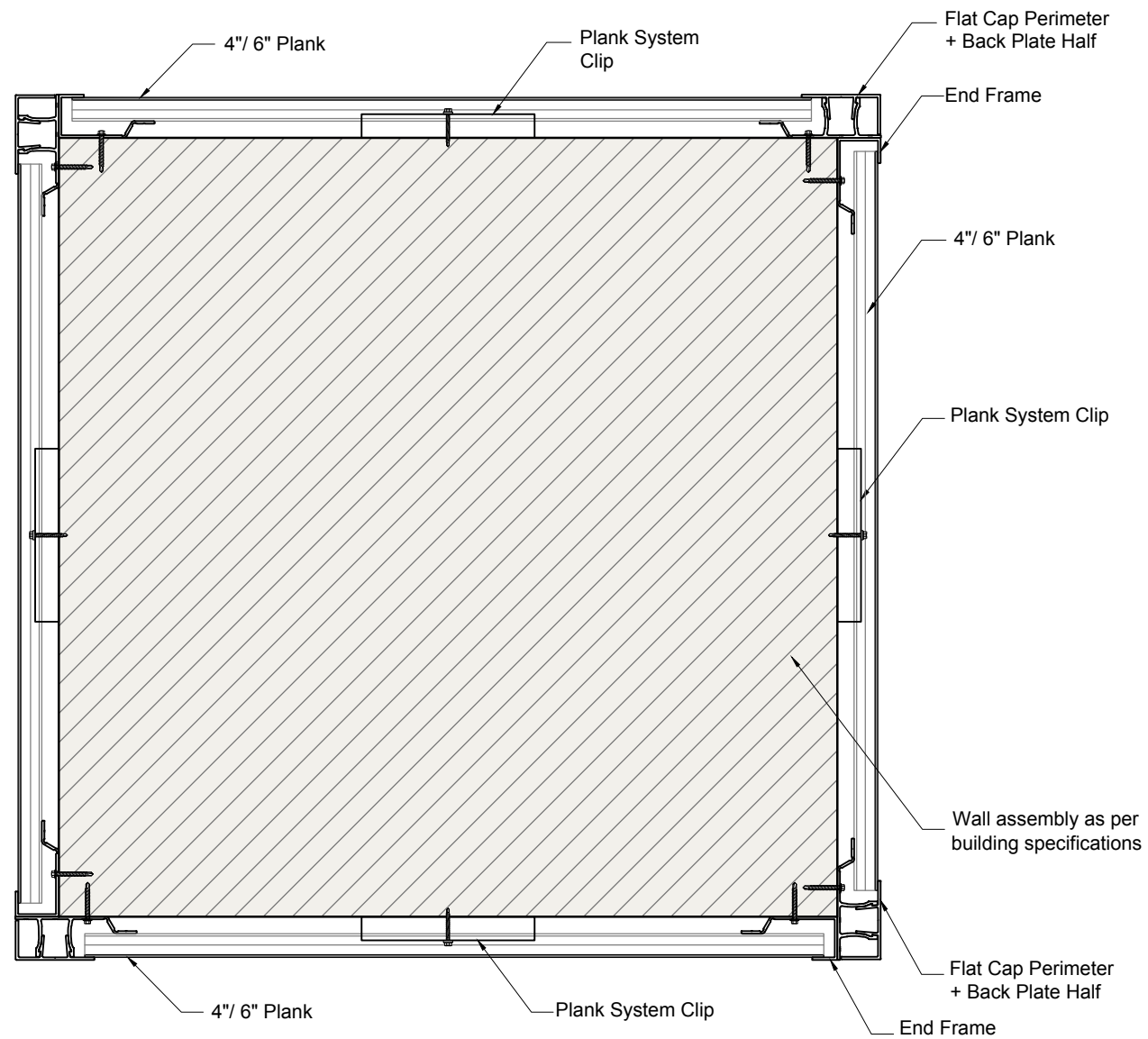
SCALE:
As noted

DATE:
20 Apr. 2020

DRAWING NUMBER:

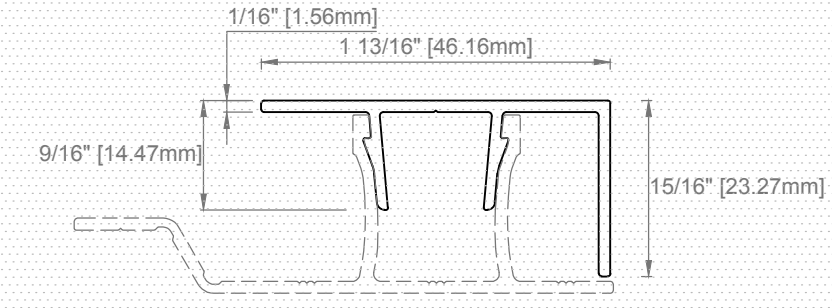
09



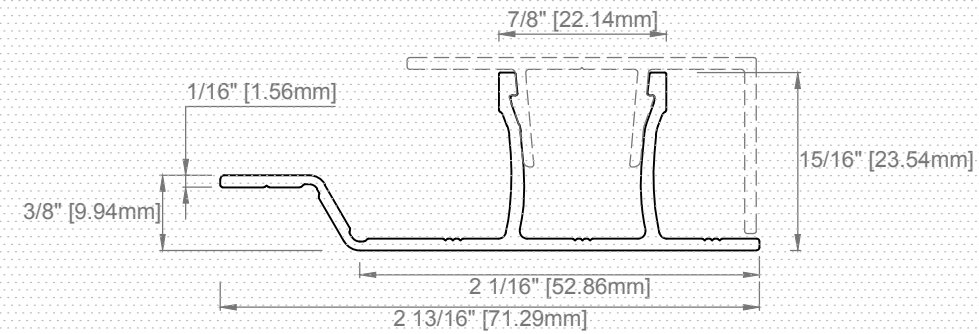


10 Column
Scale 4"=1'-0"

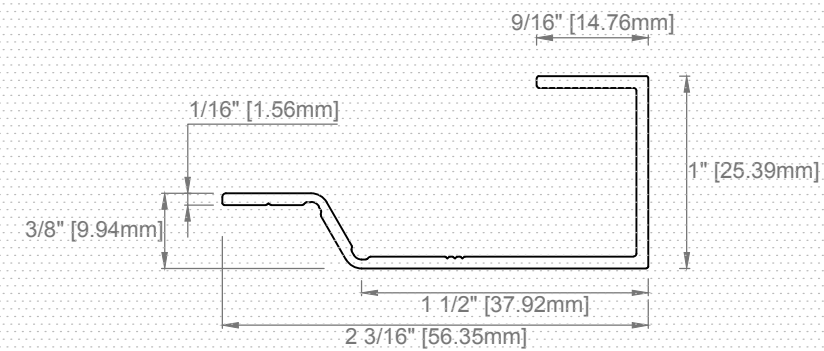
EXTRUSIONS USED IN THE EXAMPLE



FCP-12 Flat Cap Perimeter
Scale 1"=1'-0"



BPH-8 Back Plate Half
Scale 1"=1'-0"



EF-12 End Frame
Scale 1"=1'-0"



AL13[®] Architectural Systems
1278 Cliveden Avenue, V6M
6G4 Delta, BC - Canada

TEL. +1(604) 428-2513 MAIL
info@al13.com
www.al13.com

NOTE:

The contractor / builder must verify all dimensions on the job and report any discrepancy to the designer before proceeding with the work. All drawings and specifications are instruments of service and the copyright property of the designer and must be returned upon request.

AL13[®] Plank System Details

Plank System
4" Plank / 6" Plank

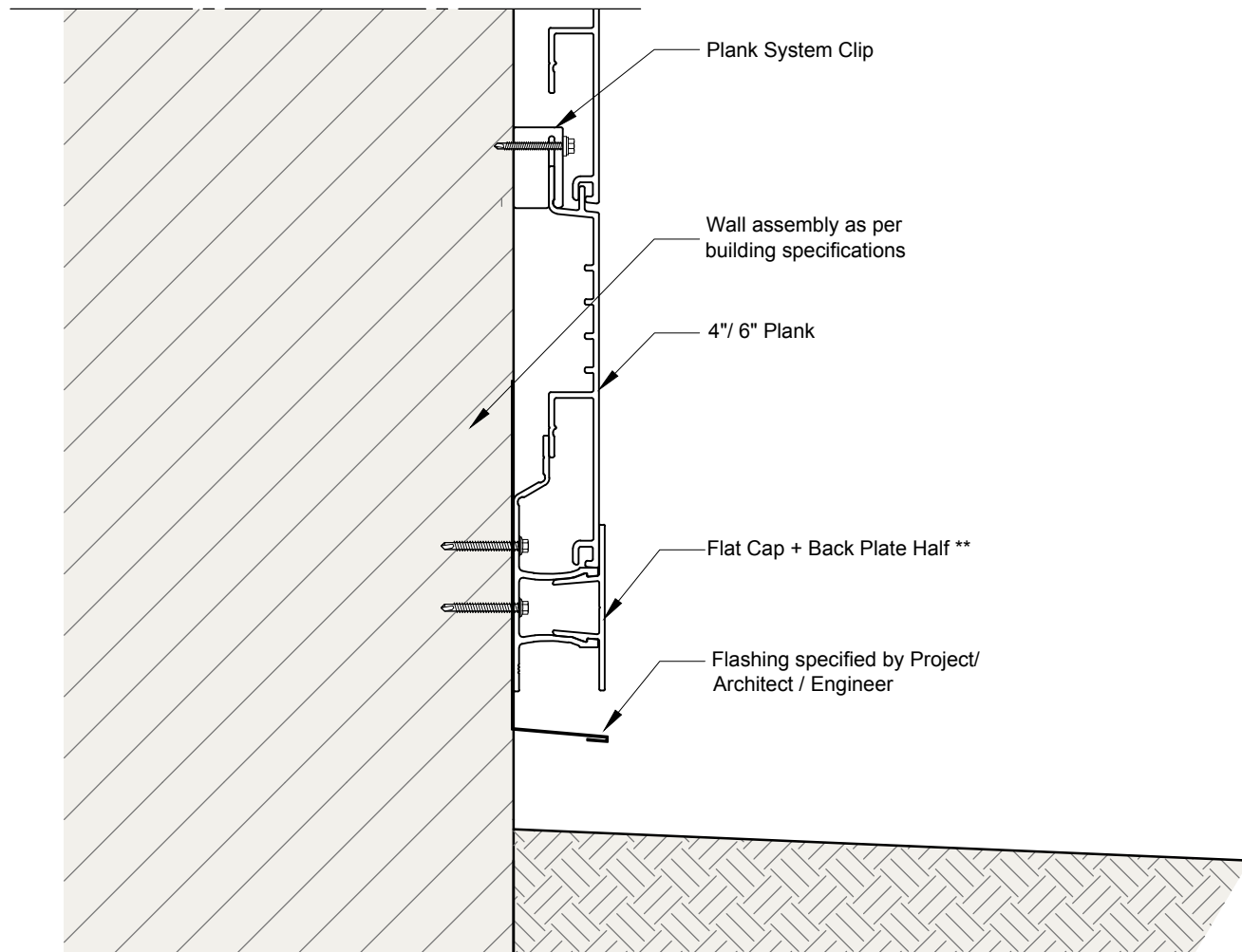
DESCRIPTION:
**GENERIC DETAIL
COLUMN**

SCALE:
As noted

DATE:
20 Apr. 2020

DRAWING
NUMBER:

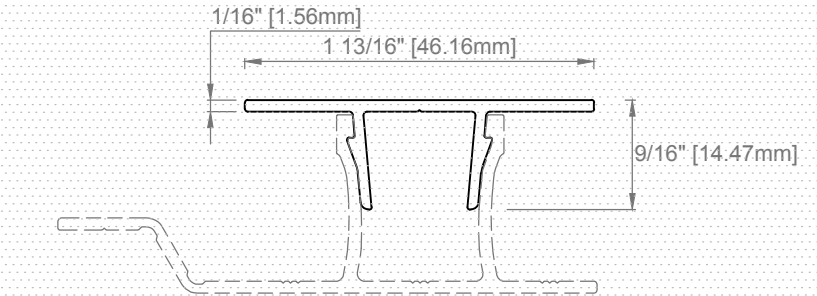
10



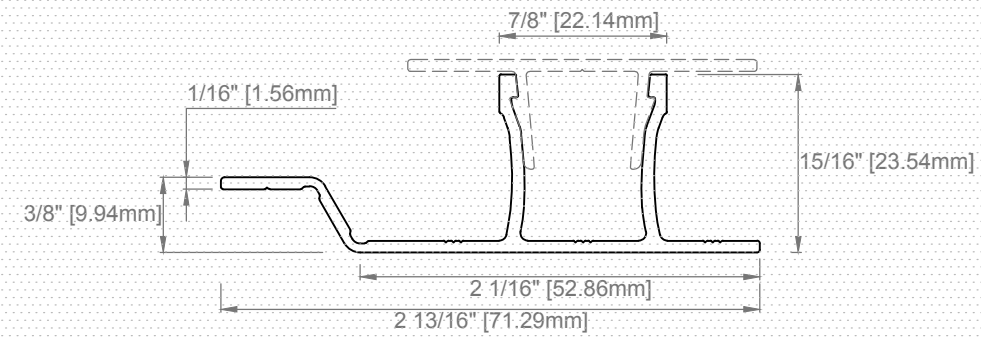
** Measure and cut horizontal Back Plate in 3.25\"/>

11a Bottom of the wall (Option A)
Scale 2\"/>

EXTRUSIONS USED IN THE EXAMPLE



FC-12 Flat Cap
Scale 1\"/>



BPH-8 Back Plate Half
Scale 1\"/>



AL13[®] Architectural Systems
1278 Cliveden Avenue, V6M
6G4 Delta, BC - Canada

TEL. +1(604) 428-2513 MAIL
info@al13.com
www.al13.com

NOTE:
The contractor / builder must verify all dimensions on the job and report any discrepancy to the designer before proceeding with the work. All drawings and specifications are instruments of service and the copyright property of the designer and must be returned upon request.

AL13[®] Plank System Details

Plank System
4\"/>

DESCRIPTION:
**GENERIC DETAIL
BOTTOM OF THE WALL
OPTION A**

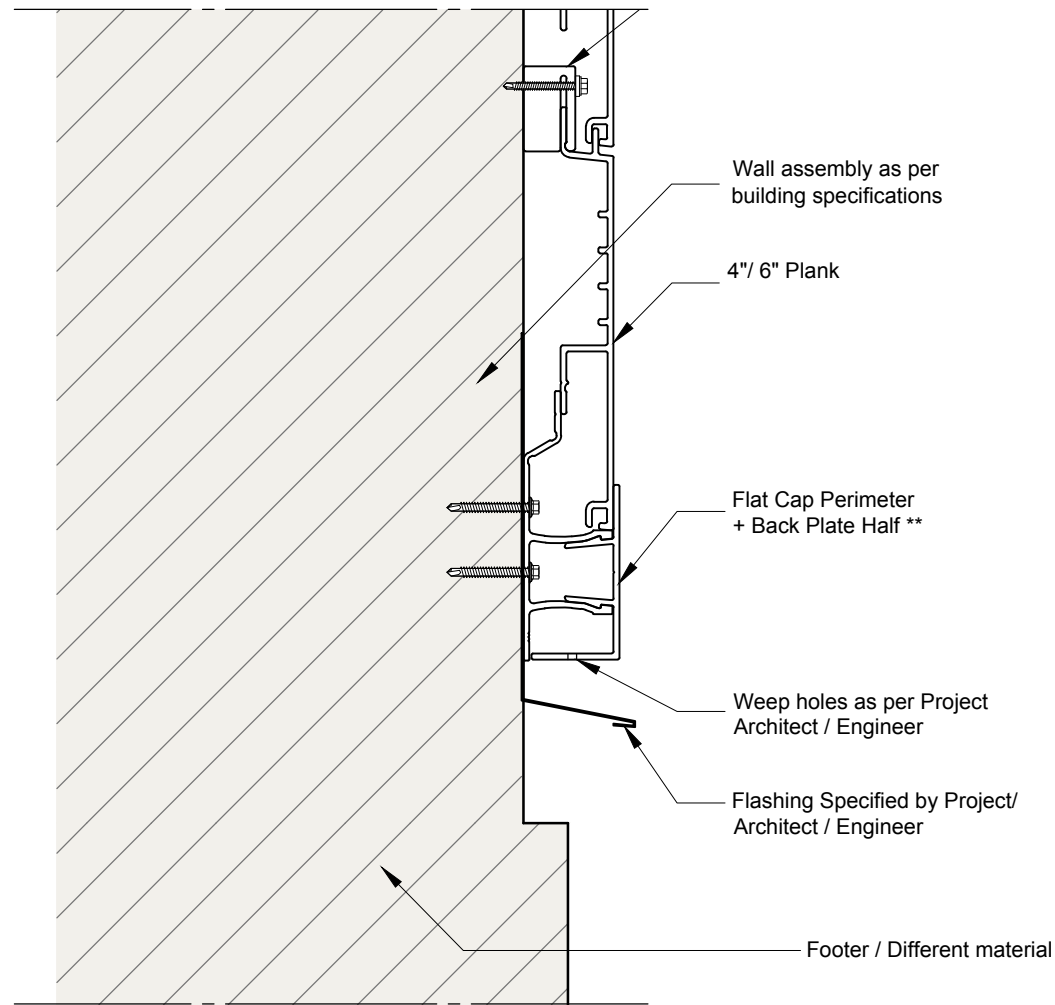
SCALE:
As noted

DRAWING
NUMBER:

DATE:
20 Apr. 2020

11

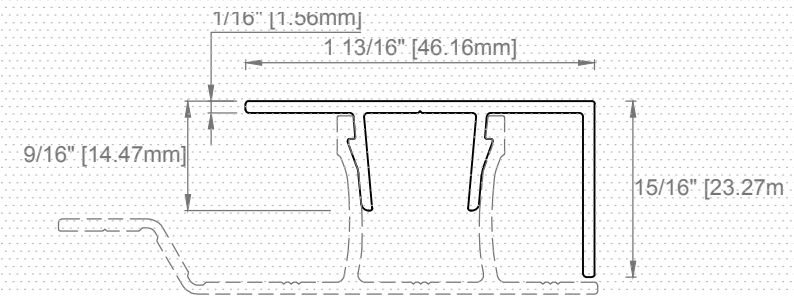




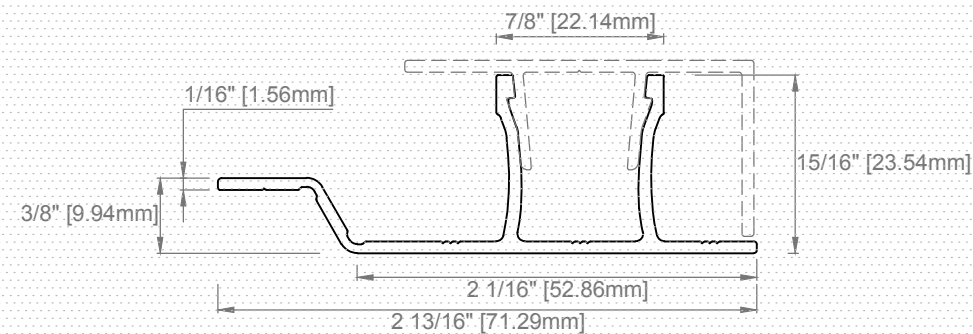
** Measure and cut horizontal Back Plate in 3.25" segments and install them every 16"; for vertical Back Plate allow approximately 2" gap from horizontal extrusions.

11b Bottom of the wall (Option B)
Scale 2"=1'-0"

EXTRUSIONS USED IN THE EXAMPLE



FCP-12 Flat Cap Perimeter
Scale 1"=1'-0"



HBP-8 Back Plate Half
Scale 1"=1'-0"



AL13® Architectural Systems
1278 Cliveden Avenue, V6M
6G4 Delta, BC - Canada

TEL. +1(604) 428-2513 MAIL
info@al13.com
www.al13.com

NOTE:

The contractor / builder must verify all dimensions on the job and report any discrepancy to the designer before proceeding with the work. All drawings and specifications are instruments of service and the copyright property of the designer and must be returned upon request.

AL13® Plank System Details

Plank System
4" Plank / 6" Plank

DESCRIPTION:

GENERIC DETAIL
BOTTOM OF THE WALL
OPTION B

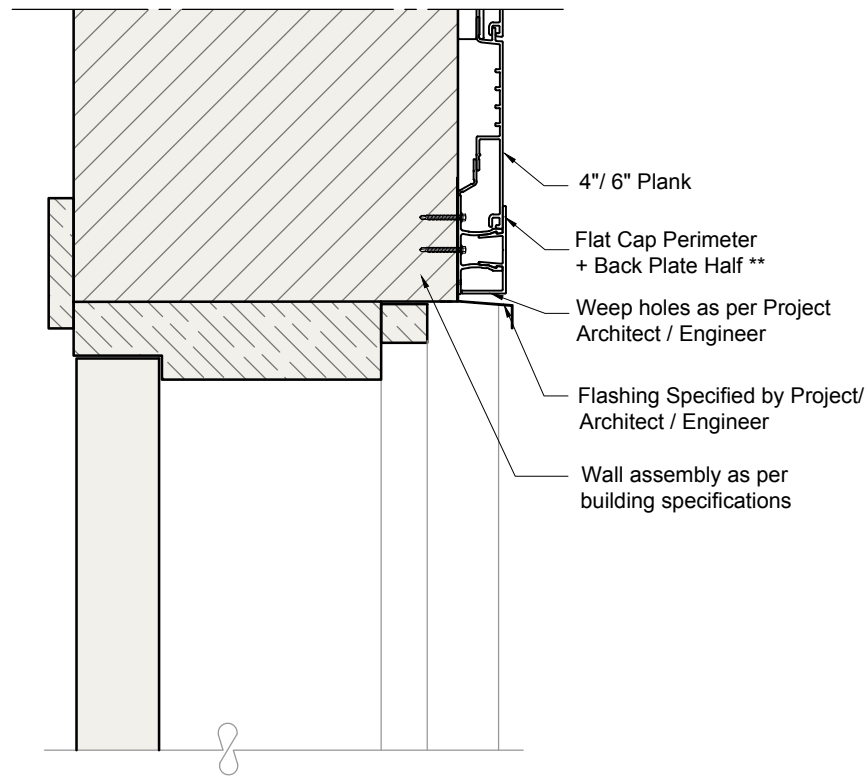
SCALE:
As noted

DRAWING
NUMBER:

DATE:
20 Apr. 2020

12

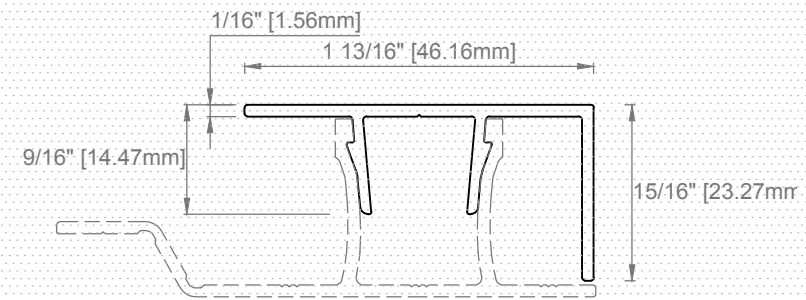




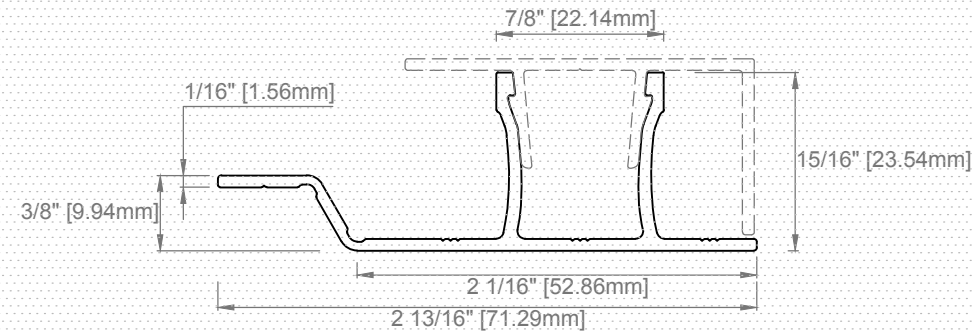
** Measure and cut horizontal Back Plate in 3.25\"/>

12b Top of the Door
Scale 4\"/>

EXTRUSIONS USED IN THE EXAMPLE



FCP-12 Flat Cap Perimeter
Scale 1\"/>



HB-8 Back Plate Half
Scale 1\"/>



AL13[®] Architectural Systems
1278 Cliveden Avenue, V6M
6G4 Delta, BC - Canada

TEL. +1(604) 428-2513 MAIL
info@al13.com
www.al13.com

NOTE:

The contractor / builder must verify all dimensions on the job and report any discrepancy to the designer before proceeding with the work. All drawings and specifications are instruments of service and the copyright property of the designer and must be returned upon request.

AL13[®] Plank System Details

Plank System
4\"/>

DESCRIPTION:
**GENERIC DETAIL
TOP OF THE DOOR**

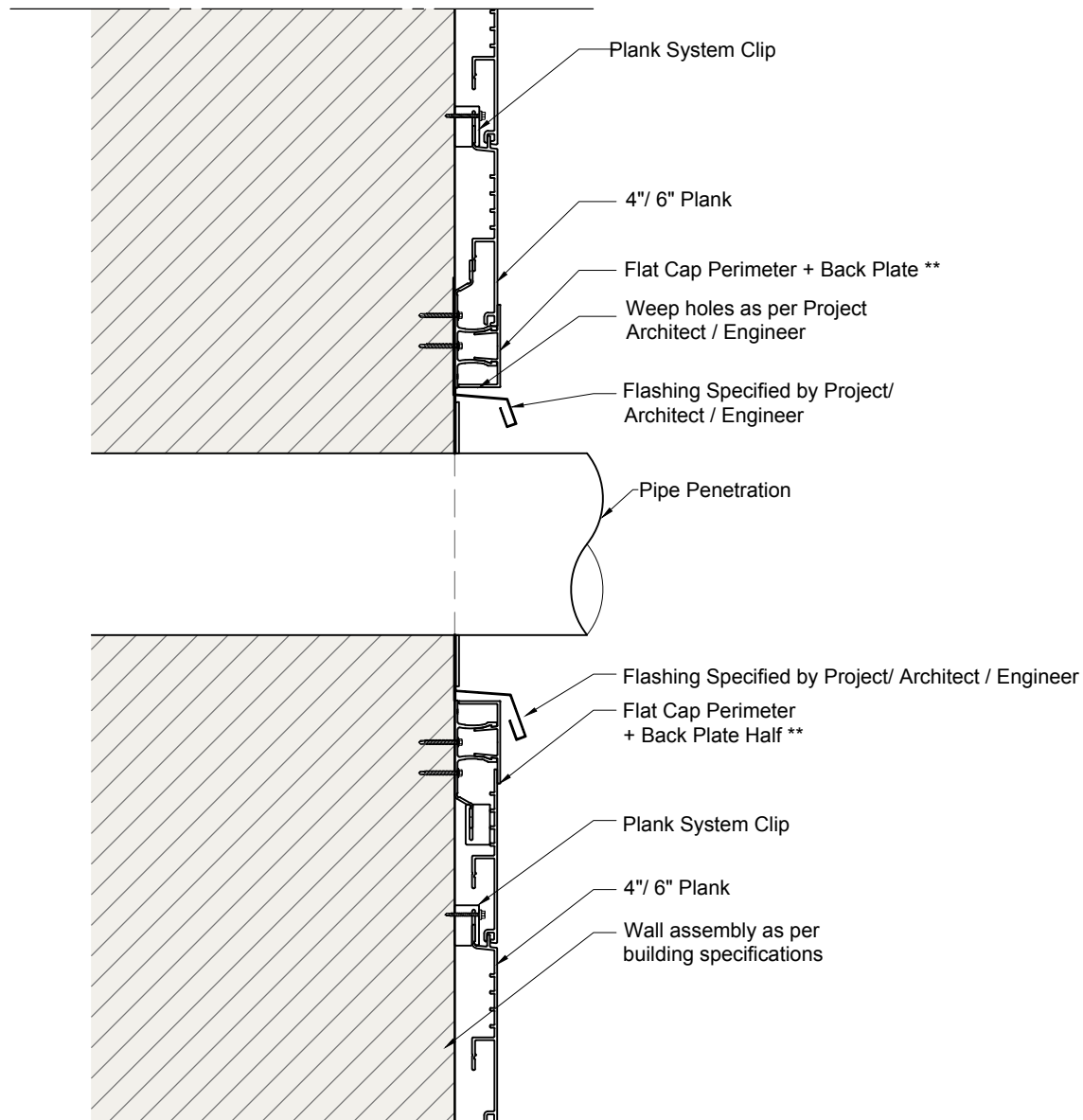
SCALE:
As noted

DATE:
20 Apr. 2020

DRAWING
NUMBER:

13

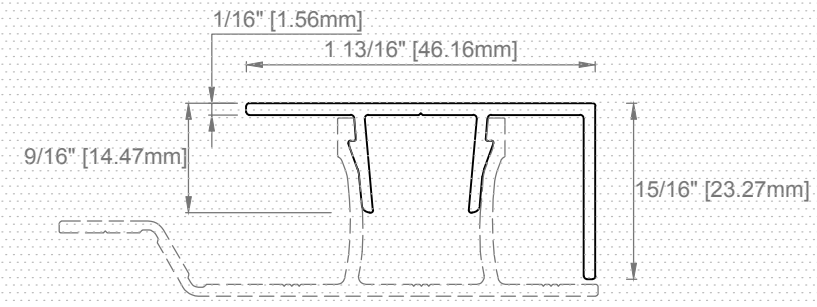




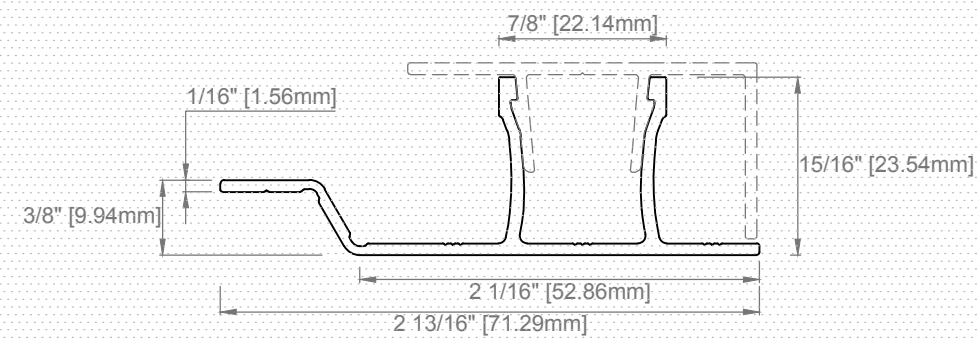
** Measure and cut horizontal Back Plate in 3.25" segments and install them every 16"; for vertical Back Plate allow approximately 2" gap from horizontal extrusions.

14 Around pipes and penetrations
Scale 4"=1'-0"

EXTRUSIONS USED IN THE EXAMPLE



FCP-12 Flat Cap Perimeter
Scale 1"=1'-0"



BPH-8 Back Plate Half
Scale 1"=1'-0"



AL13® Architectural Systems
1278 Cliveden Avenue, V6M
6G4 Delta, BC - Canada

TEL. +1(604) 428-2513 MAIL
info@al13.com
www.al13.com

NOTE:

The contractor / builder must verify all dimensions on the job and report any discrepancy to the designer before proceeding with the work. All drawings and specifications are instruments of service and the copyright property of the designer and must be returned upon request.

AL13® Plank System Details

Plank System
4" Plank / 6" Plank

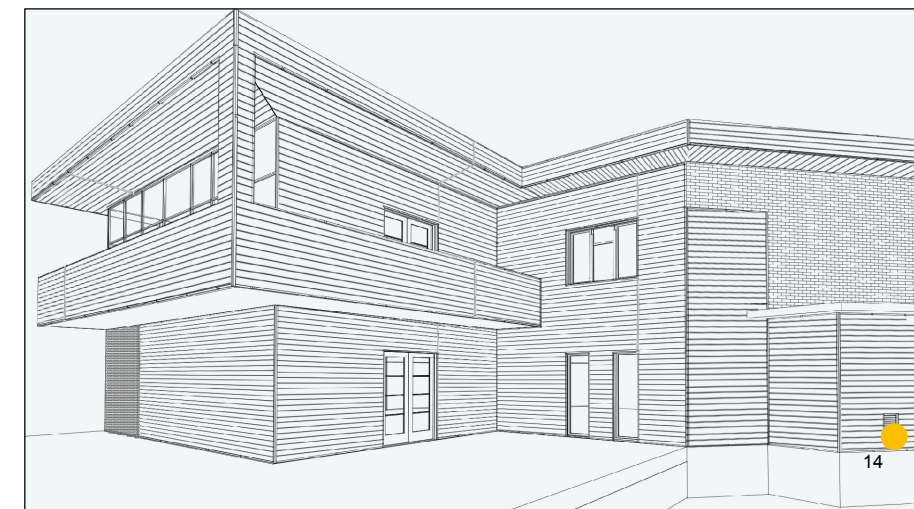
DESCRIPTION:
**GENERIC DETAIL
PIPE PENETRATION**

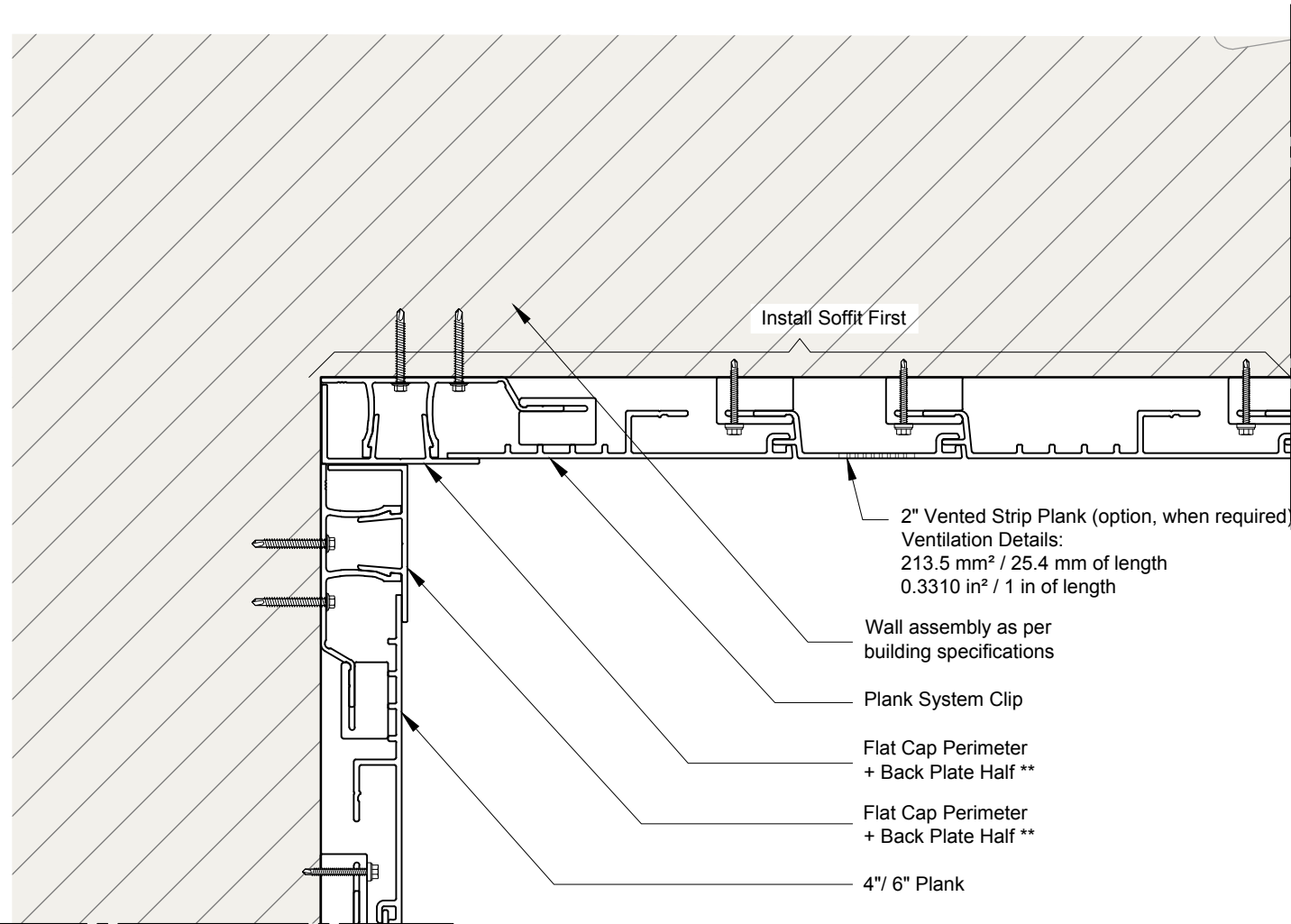
SCALE:
As noted

DATE:
20 Apr. 2020

DRAWING
NUMBER:

14

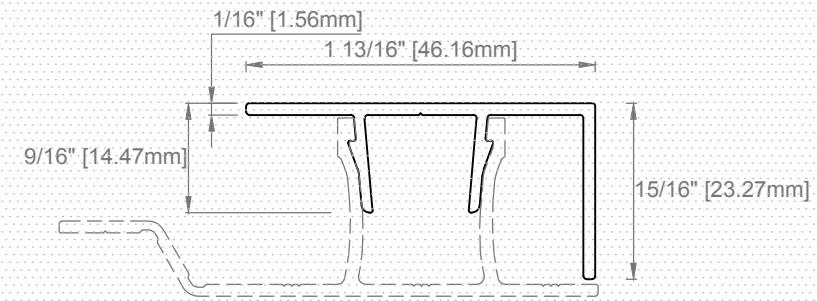




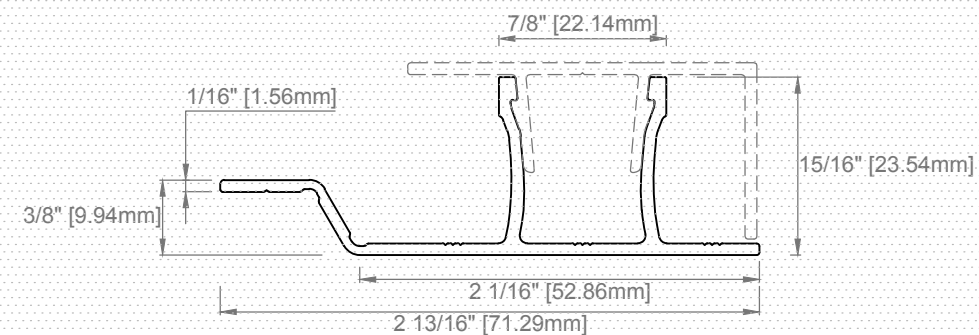
** Measure and cut horizontal Back Plate in 3.25" segments and install them every 16"; for vertical Back Plate allow approximately 2" gap from horizontal extrusions.

15a Wall and Soffit Connection (Case A, soffit plank parallel to the wall)
Scale 2"=1'-0"

EXTRUSIONS USED IN THE EXAMPLE



FCP-12 Flat Cap Perimeter
Scale 1"=1'-0"



BPH-8 Back Plate Half
Scale 1"=1'-0"



AL13® Architectural Systems
1278 Cliveden Avenue, V6M
6G4 Delta, BC - Canada

TEL. +1(604) 428-2513 MAIL
info@al13.com
www.al13.com

NOTE:

The contractor / builder must verify all dimensions on the job and report any discrepancy to the designer before proceeding with the work. All drawings and specifications are instruments of service and the copyright property of the designer and must be returned upon request.

AL13® Plank System Details

Plank System
4" Plank / 6" Plank

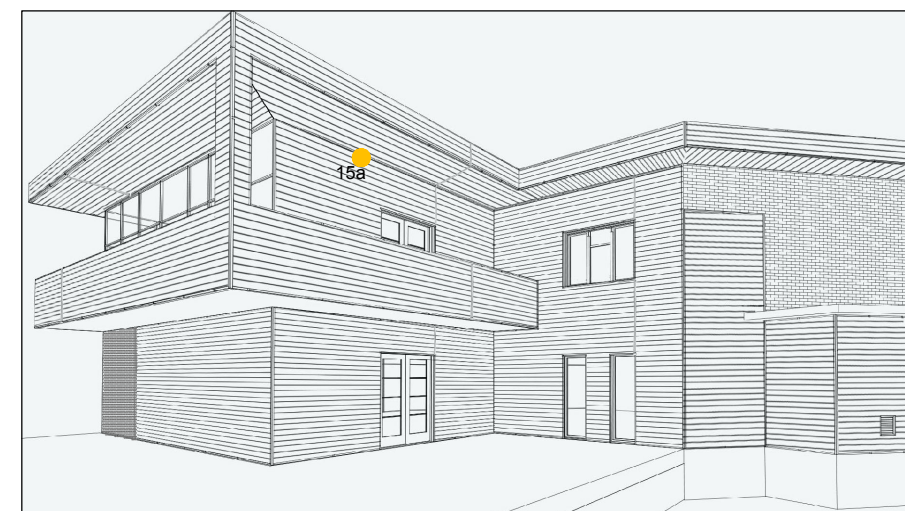
DESCRIPTION:
**GENERIC DETAIL
WALL AND SOFFIT
CONNECTION
CASE A**

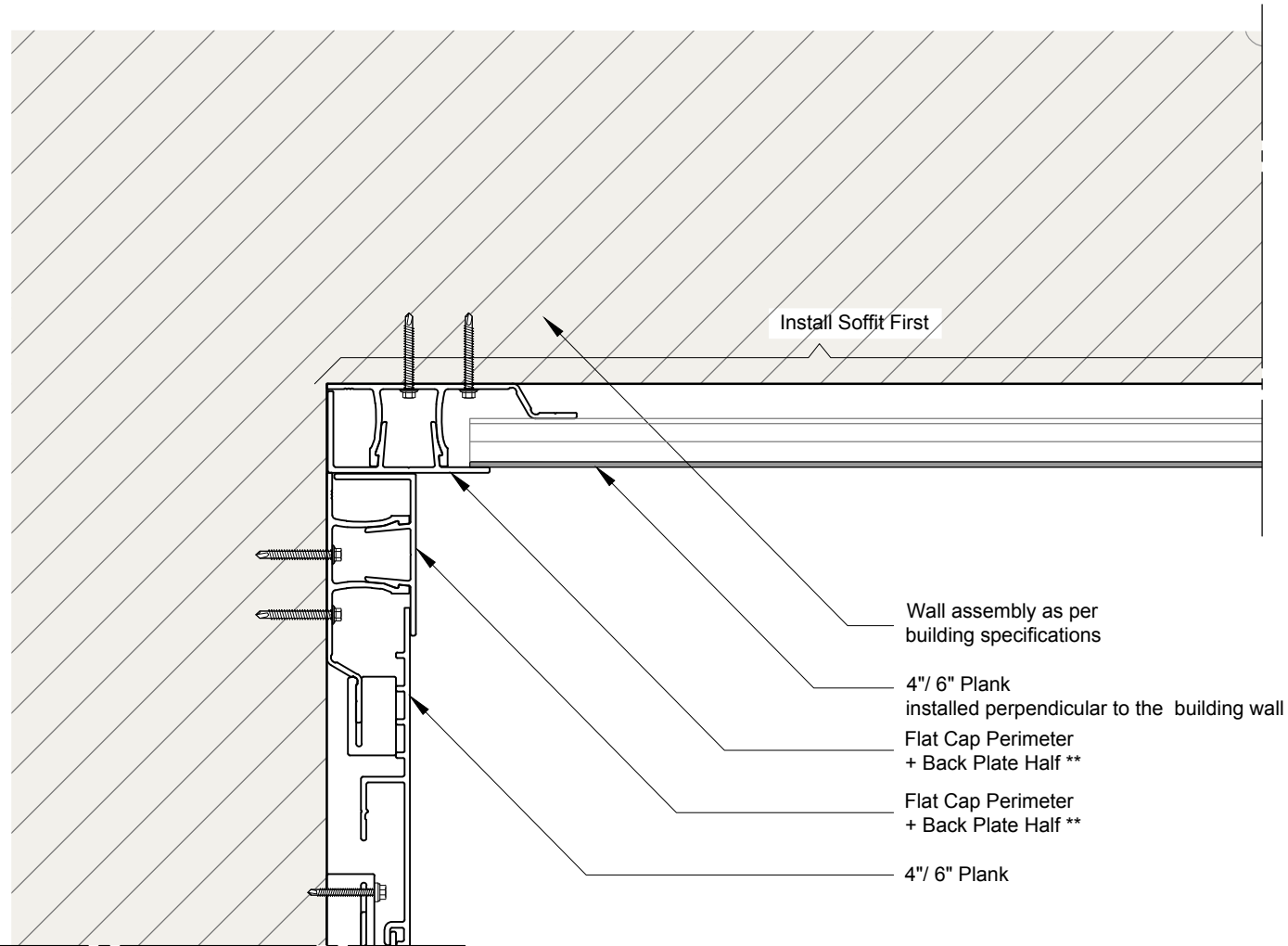
SCALE:
As noted

DRAWING
NUMBER:

DATE:
20 Apr. 2020

15

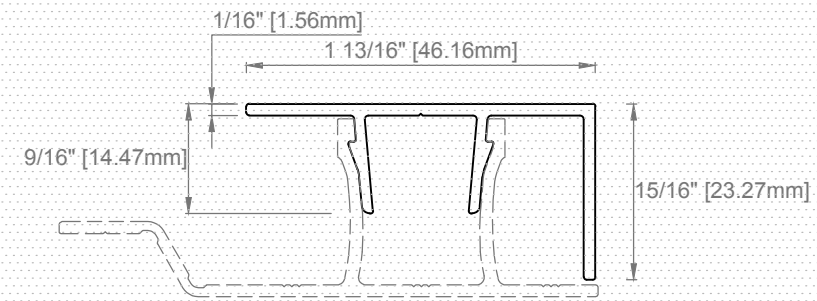




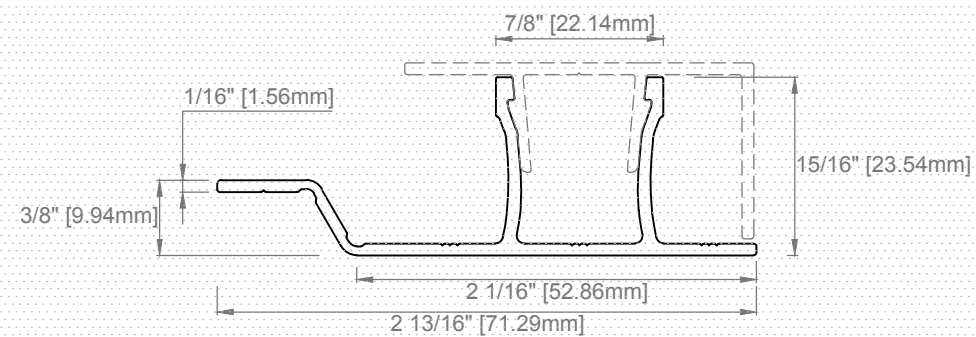
** Measure and cut horizontal Back Plate in 3.25" segments and install them every 16";
for vertical Back Plate allow approximately 2" gap from horizontal extrusions.

15b Wall and Soffit Connection (Case B, soffit planks perpendicular to the wall)
Scale 2"=1'-0"

EXTRUSIONS USED IN THE EXAMPLE



FCP-12 Flat Cap Perimeter
Scale 1"=1'-0"



HBP-8 Back Plate Half
Scale 1"=1'-0"



AL13[®] Architectural Systems
1278 Cliveden Avenue, V6M
6G4 Delta, BC - Canada

TEL. +1(604) 428-2513 MAIL
info@al13.com
www.al13.com

NOTE:

The contractor / builder must verify all dimensions on the job and report any discrepancy to the designer before proceeding with the work. All drawings and specifications are instruments of service and the copyright property of the designer and must be returned upon request.

AL13[®] Plank System Details

Plank System
4" Plank / 6" Plank

DESCRIPTION:
**GENERIC DETAIL
WALL AND SOFFIT
CONNECTION
OPTION B**

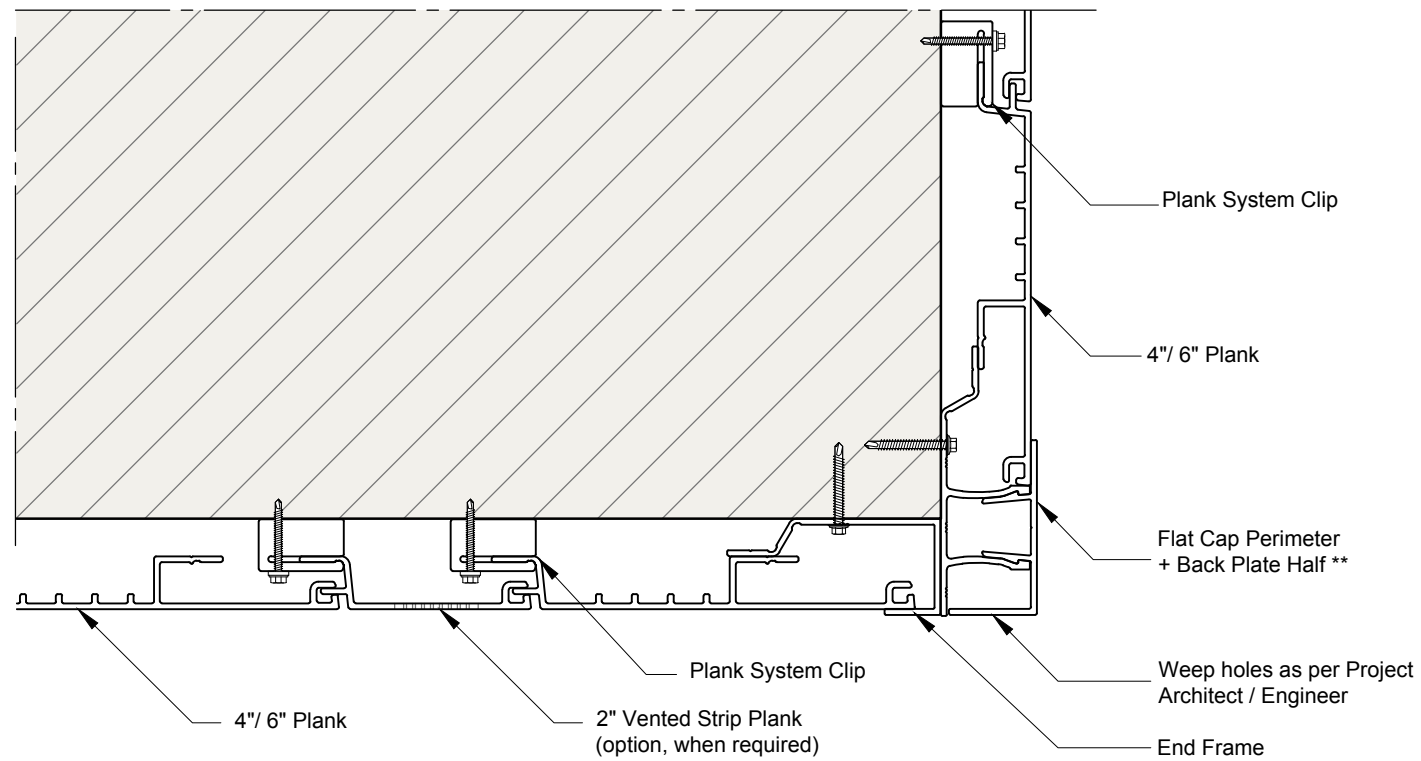
SCALE:
As noted

DRAWING
NUMBER:

DATE:
20 Apr. 2020

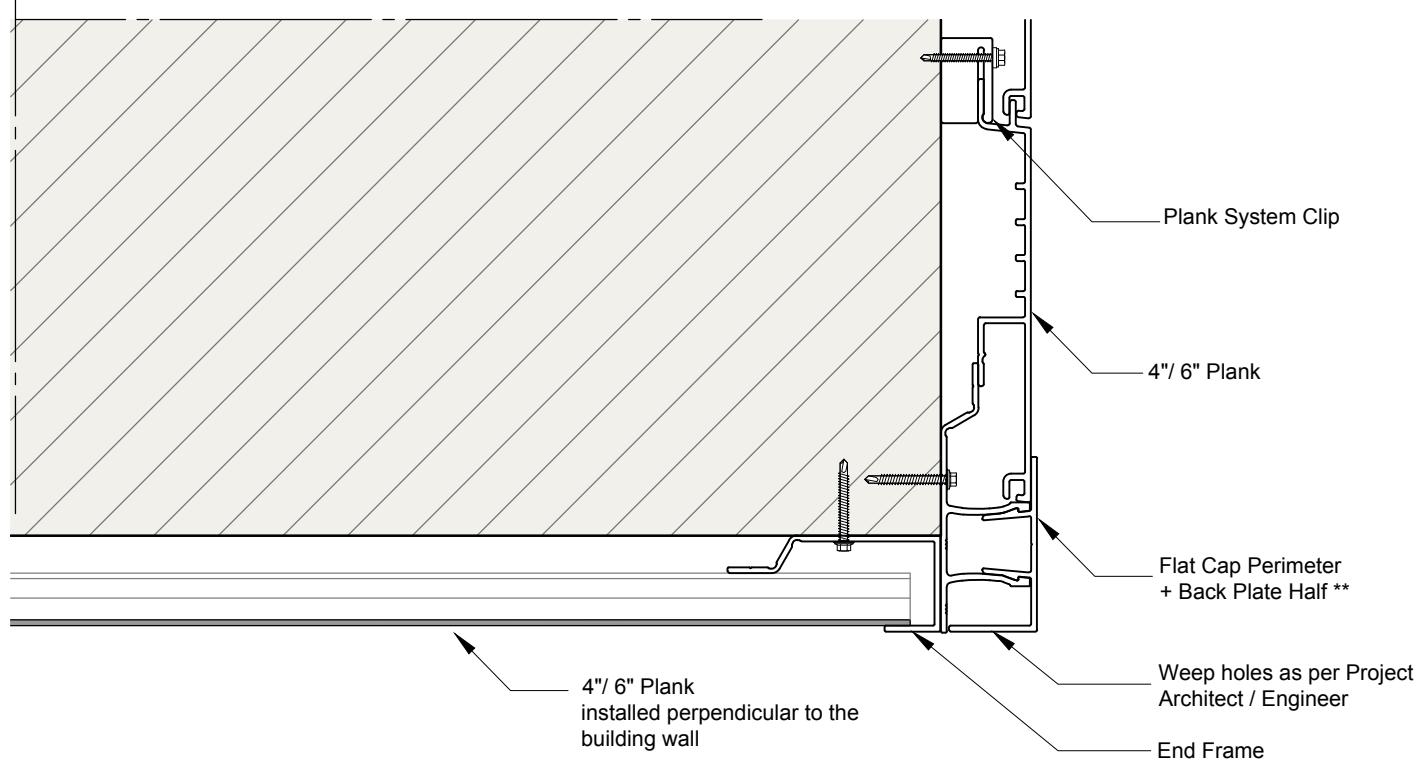
16





** Measure and cut horizontal Back Plate in 3.25" segments and install them every 16"; for vertical Back Plate allow approximately 2" gap from horizontal extrusions.

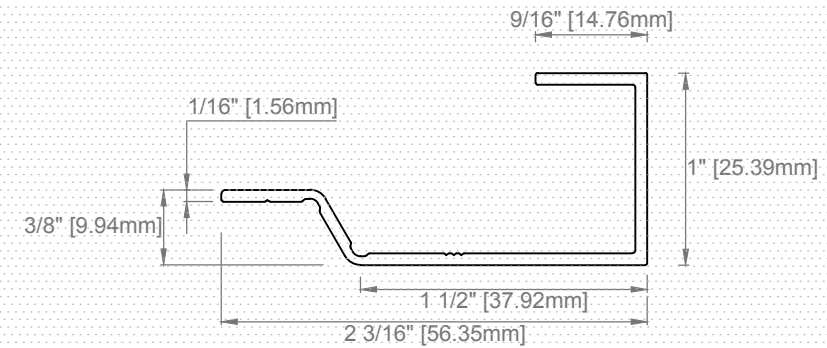
16a Fascia and Soffit Connection (Case A, soffit plank parallel to the wall)
Scale 2"=1'-0"



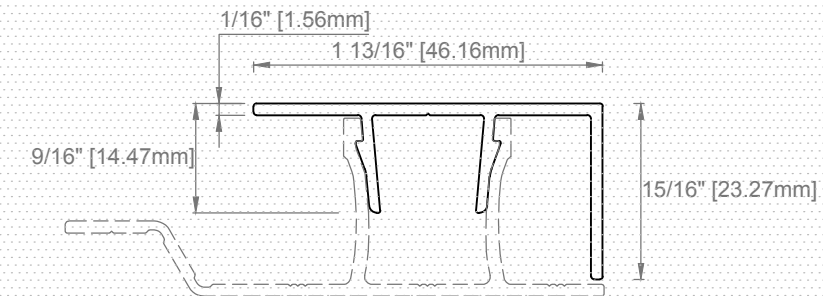
** Measure and cut horizontal Back Plate in 3.25" segments and install them every 16"; for vertical Back Plate allow approximately 2" gap from horizontal extrusion

16b Fascia and Soffit Connection (Case B, soffit plank perpendicular to the wall)
Scale 2"=1'-0"

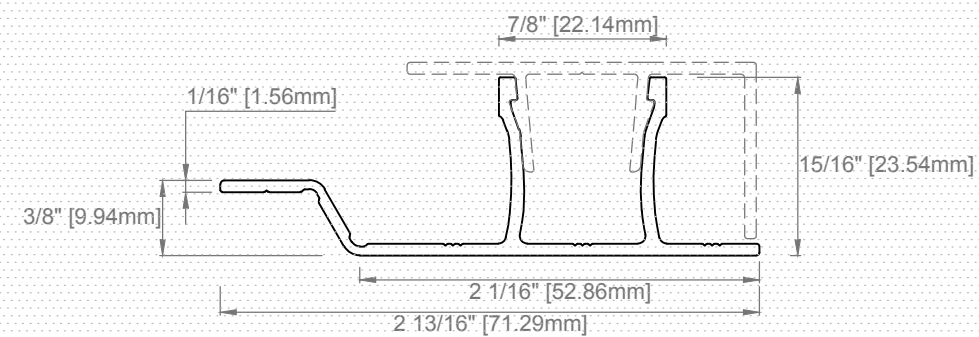
EXTRUSIONS USED IN THE EXAMPLE



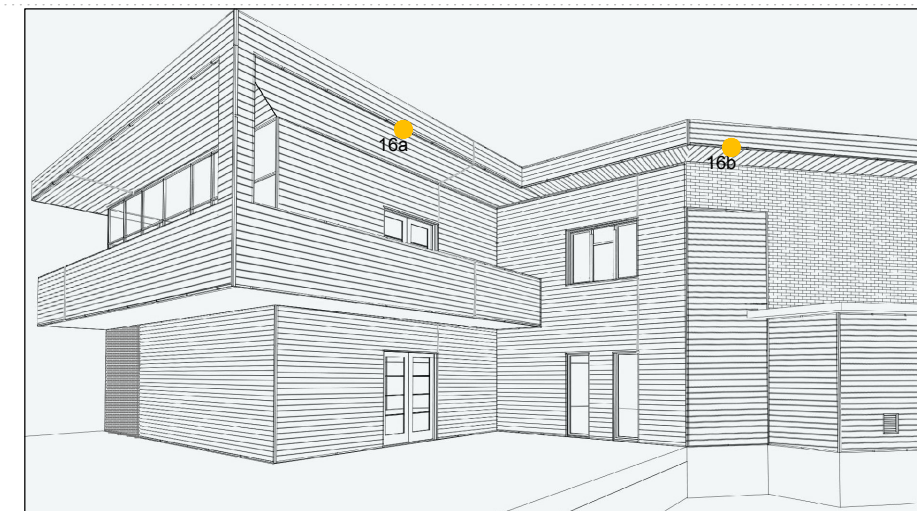
EF-12 End Frame
Scale 1"=1'-0"



FCP-12 Flat Cap Perimeter
Scale 1"=1'-0"



BPH-8 Back Plate Half
Scale 1"=1'-0"



AL13® Architectural Systems
1278 Cliveden Avenue, V6M
6G4 Delta, BC - Canada

TEL. +1(604) 428-2513 MAIL
info@al13.com
www.al13.com

NOTE:

The contractor / builder must verify all dimensions on the job and report any discrepancy to the designer before proceeding with the work. All drawings and specifications are instruments of service and the copyright property of the designer and must be returned upon request.

AL13® Plank System Details

Plank System
4" Plank / 6" Plank

DESCRIPTION:

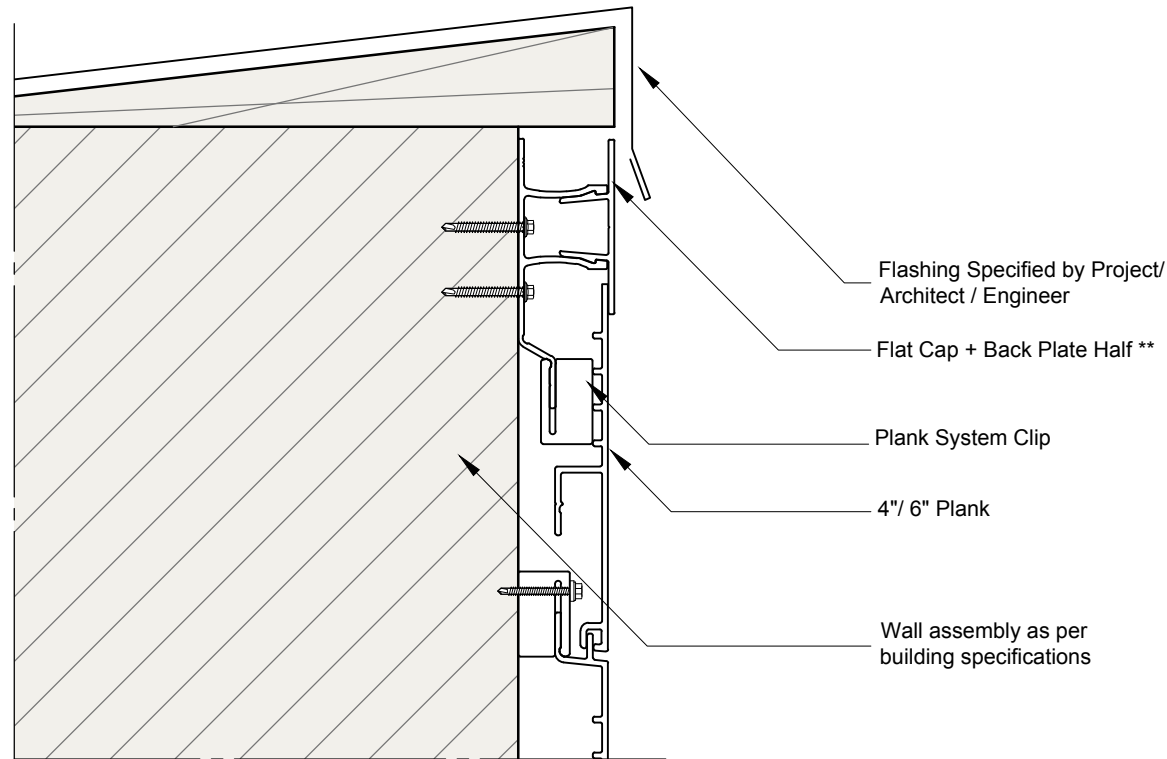
**GENERIC DETAIL
FASCIA AND SOFFIT
CONNECTION**

SCALE:
As noted

DRAWING
NUMBER:

DATE:
20 Apr. 2020

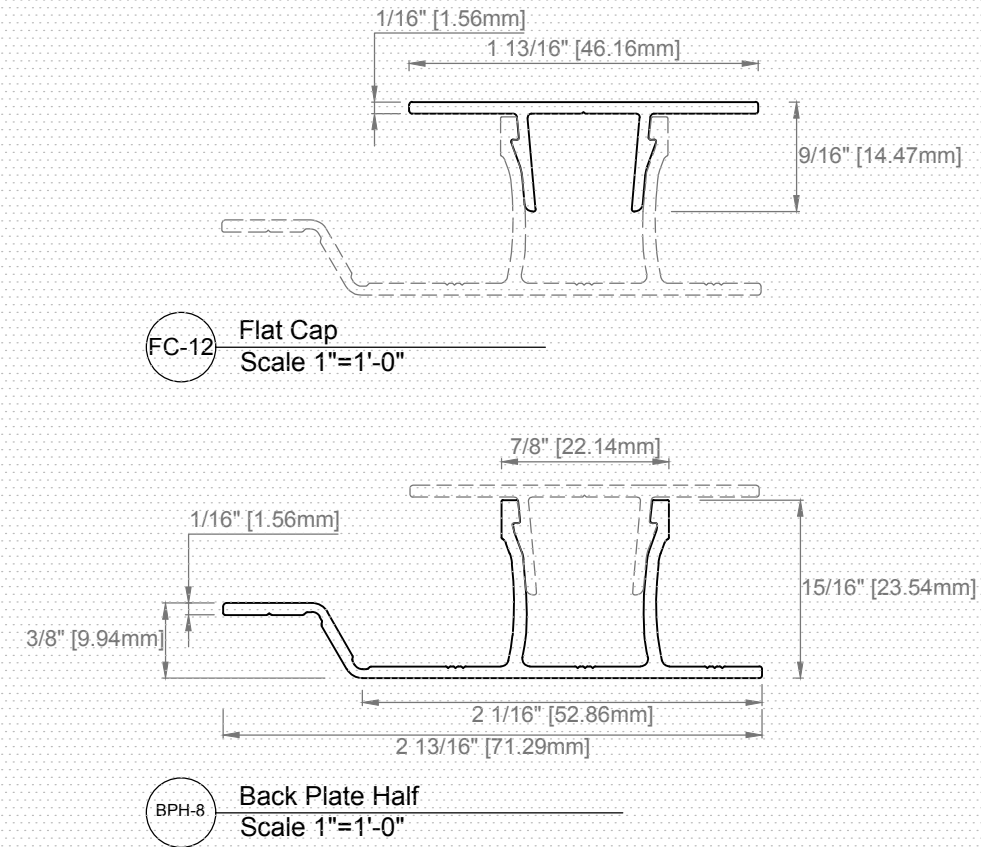
17



** Measure and cut horizontal Back Plate in 3.25" segments and install them every 16"; for vertical Back Plate allow approximately 2" gap from horizontal extrusions.

17 Top of the Wall / Fascia
Scale 2"=1'-0"

EXTRUSIONS USED IN THE EXAMPLE



FC-12 Flat Cap
Scale 1"=1'-0"

BPH-8 Back Plate Half
Scale 1"=1'-0"



AL13® Architectural Systems
1278 Cliveden Avenue, V6M
6G4 Delta, BC - Canada

TEL. +1(604) 428-2513 MAIL
info@al13.com
www.al13.com

NOTE:
The contractor / builder must verify all dimensions on the job and report any discrepancy to the designer before proceeding with the work. All drawings and specifications are instruments of service and the copyright property of the designer and must be returned upon request.

AL13® Plank System Details

Plank System
4" Plank / 6" Plank

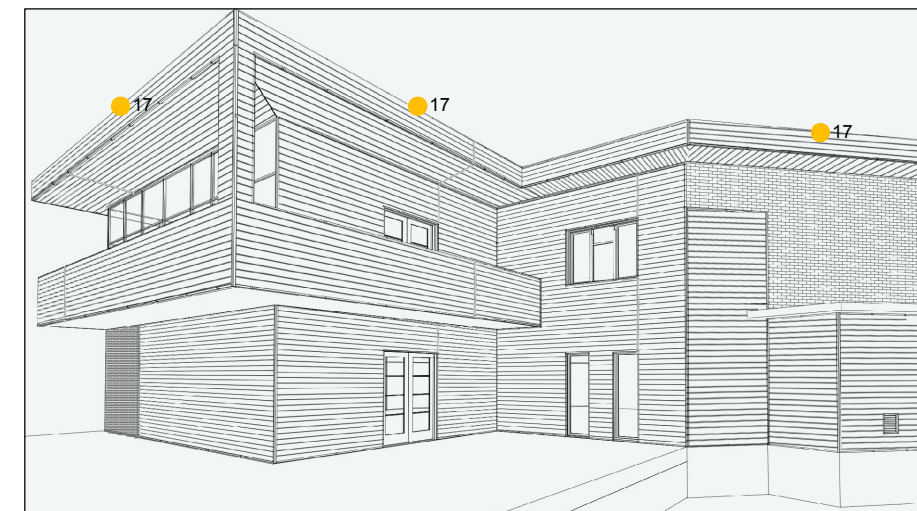
DESCRIPTION:
**GENERIC DETAIL
TOP OF THE
WALL / FASCIA**

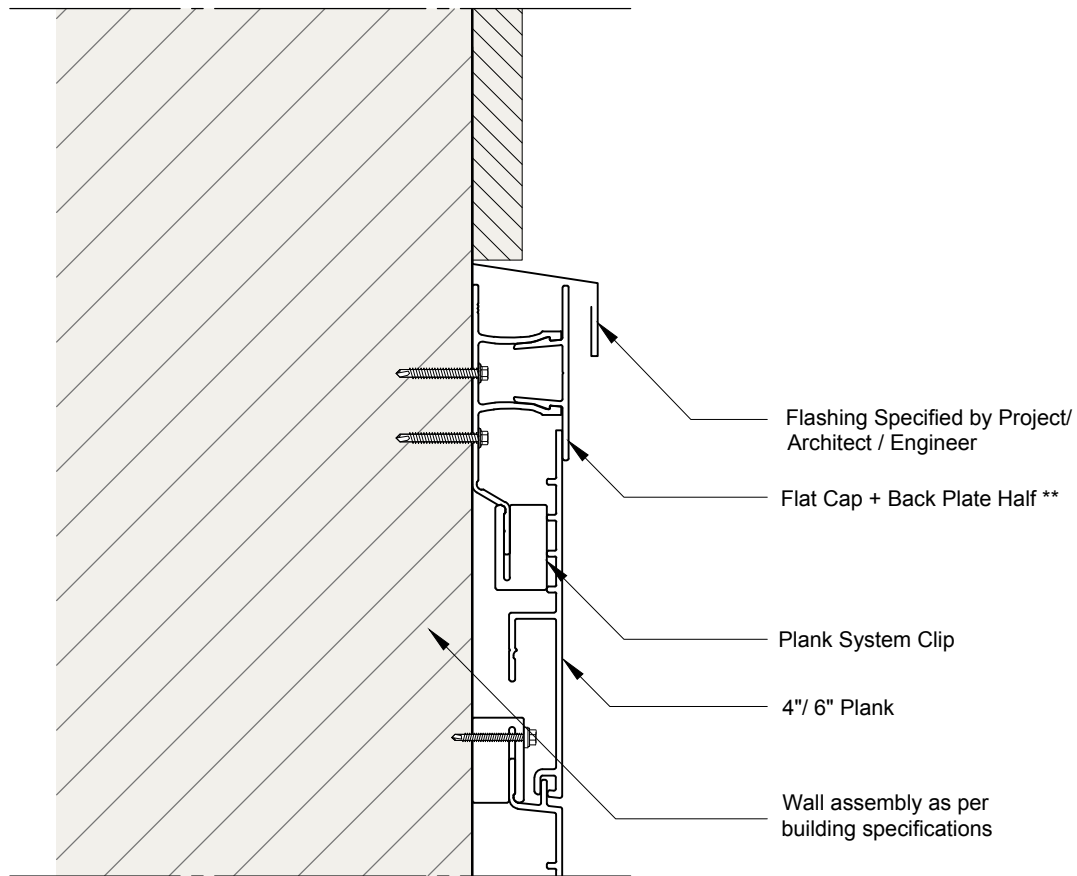
SCALE:
As noted

DATE:
20 Apr. 2020

DRAWING
NUMBER:

18

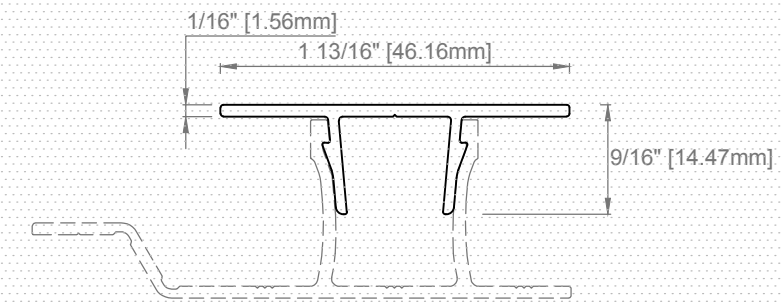




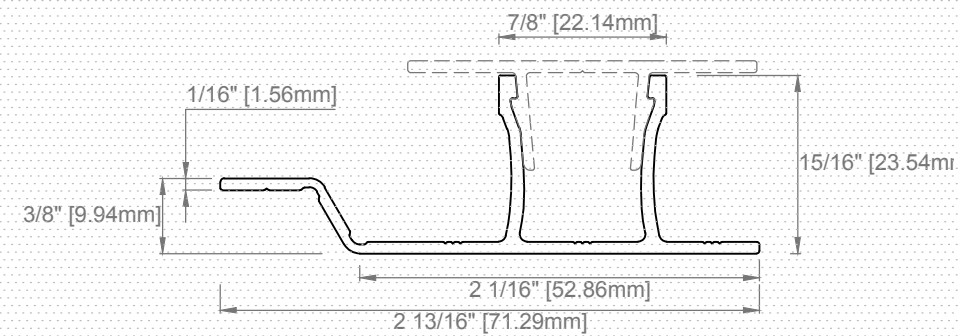
** Measure and cut horizontal Back Plate in 3.25" segments and install them every 16";
for vertical Back Plate allow approximately 2" gap from horizontal extrusions.

18 Top of the Wall - Horizontal Transition
Scale 2"=1'-0"

EXTRUSIONS USED IN THE EXAMPLE



FC-12 Flat Cap
Scale 1"=1'-0"



BPH-8 Back Plate Half
Scale 1"=1'-0"



AL13® Architectural Systems
1278 Cliveden Avenue, V6M
6G4 Delta, BC - Canada

TEL. +1(604) 428-2513 MAIL
info@al13.com
www.al13.com

NOTE:

The contractor / builder must verify all dimensions on the job and report any discrepancy to the designer before proceeding with the work. All drawings and specifications are instruments of service and the copyright property of the designer and must be returned upon request.

AL13® Plank System Details

Plank System
4" Plank / 6" Plank

DESCRIPTION:
**GENERIC DETAIL
TOP OF THE WALL
HORIZONTAL
TRANSITION**

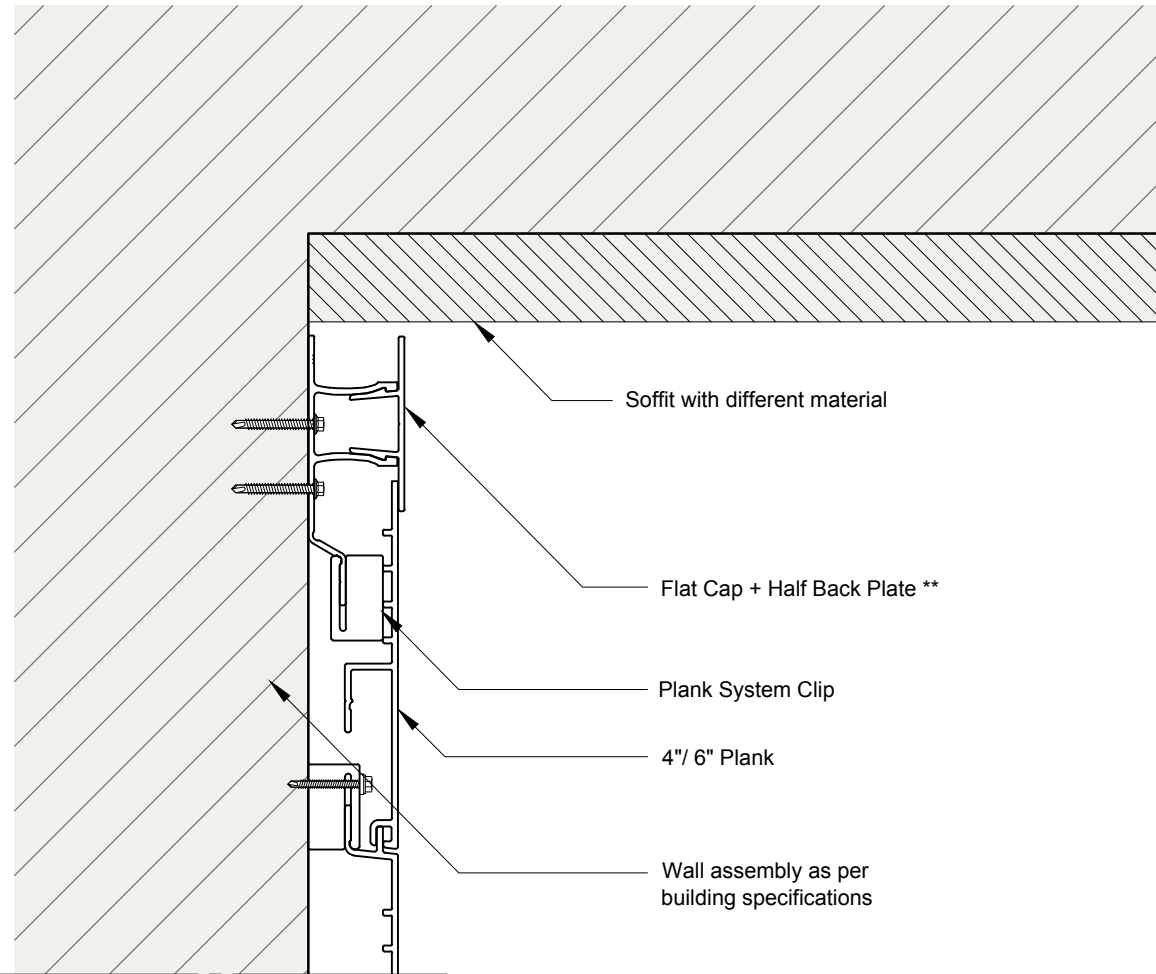
SCALE:
As noted

DRAWING
NUMBER:

DATE:
20 Apr. 2020

19

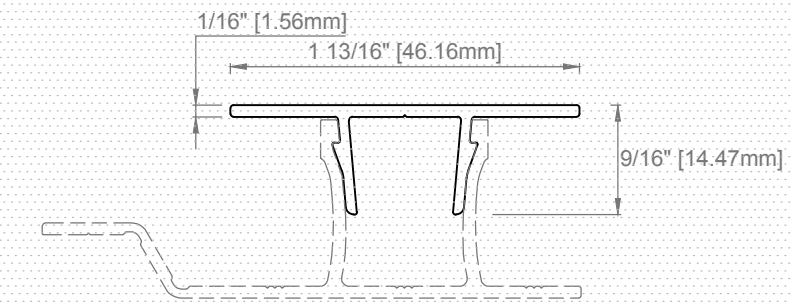




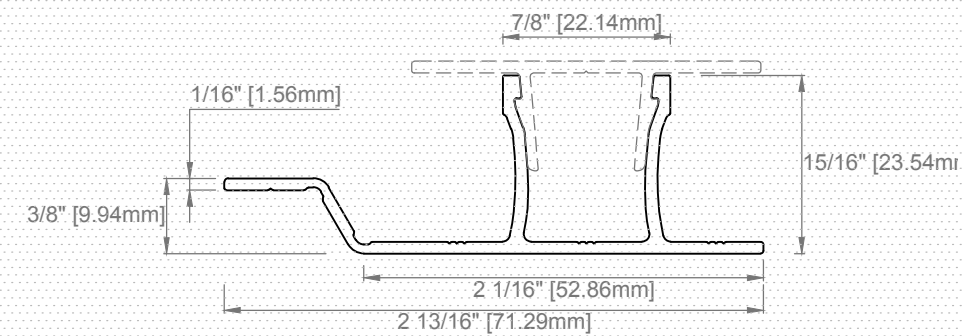
** Measure and cut horizontal Back Plate in 3.25" segments and install them every 16"; for vertical Back Plate allow approximately 2" gap from horizontal extrusions.

19 End of the Wall - Transition with Soffit
Scale 2"=1'-0"

EXTRUSIONS USED IN THE EXAMPLE



FC-12 Flat Cap
Scale 1"=1'-0"



BPH-8 Back Plate Half
Scale 1"=1'-0"



AL13® Architectural Systems
1278 Cliveden Avenue, V6M
6G4 Delta, BC - Canada

TEL. +1(604) 428-2513 MAIL
info@al13.com
www.al13.com

NOTE:

The contractor / builder must verify all dimensions on the job and report any discrepancy to the designer before proceeding with the work. All drawings and specifications are instruments of service and the copyright property of the designer and must be returned upon request.

AL13® Plank System Details

Plank System
4" Plank / 6" Plank

DESCRIPTION:
GENERIC DETAIL
END OF THE WALL
TRANSITION WITH
SOFFIT

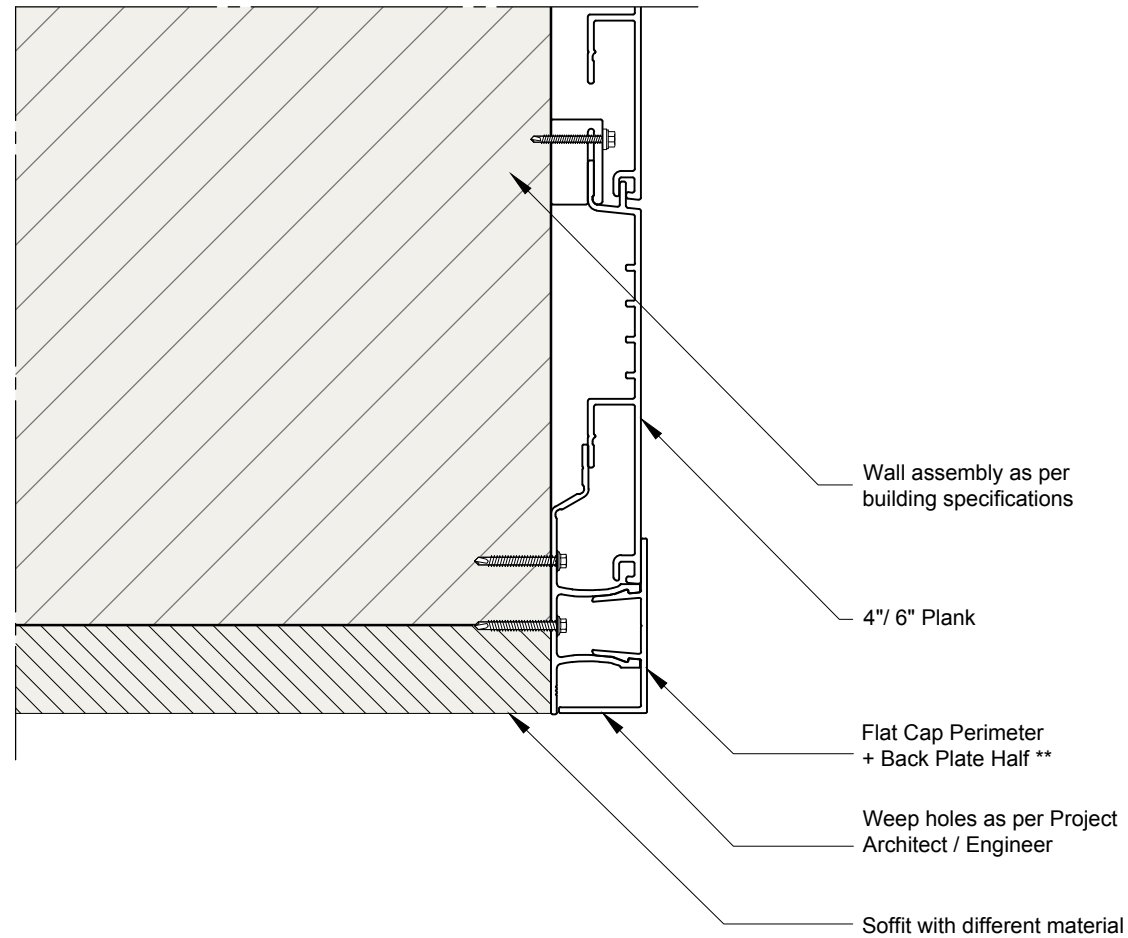
SCALE:
As noted

DRAWING
NUMBER:

DATE:
20 Apr. 2020

20

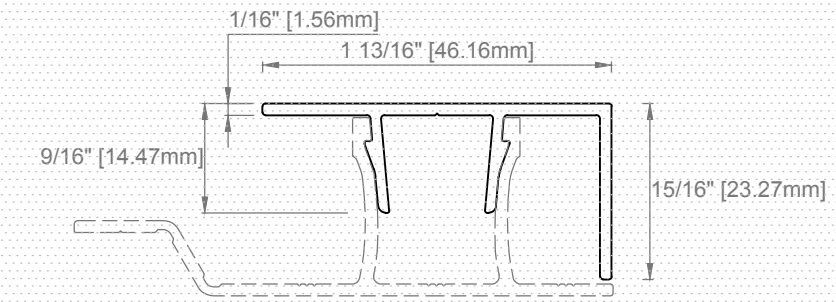




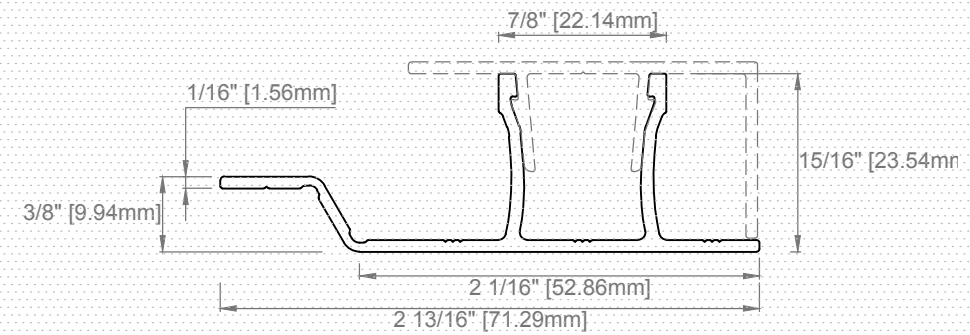
** Measure and cut horizontal Back Plate in 3.25" segments and install them every 16"; for vertical Back Plate allow approximately 2" gap from horizontal extrusions.

20 Soffit and Fascia Connection
Scale 2"=1'-0"

EXTRUSIONS USED IN THE EXAMPLE



FCP-12 Flat Cap Perimeter
Scale 1"=1'-0"



BPH-8 Back Plate Half
Scale 1"=1'-0"



AL13[®] Architectural Systems
1278 Cliveden Avenue, V6M
6G4 Delta, BC - Canada

TEL. +1(604) 428-2513 MAIL
info@al13.com
www.al13.com

NOTE:

The contractor / builder must verify all dimensions on the job and report any discrepancy to the designer before proceeding with the work. All drawings and specifications are instruments of service and the copyright property of the designer and must be returned upon request.

AL13[®] Plank System Details

Plank System
4" Plank / 6" Plank

DESCRIPTION:
GENERIC DETAIL
SOFFIT AND FASCIA CONNECTION

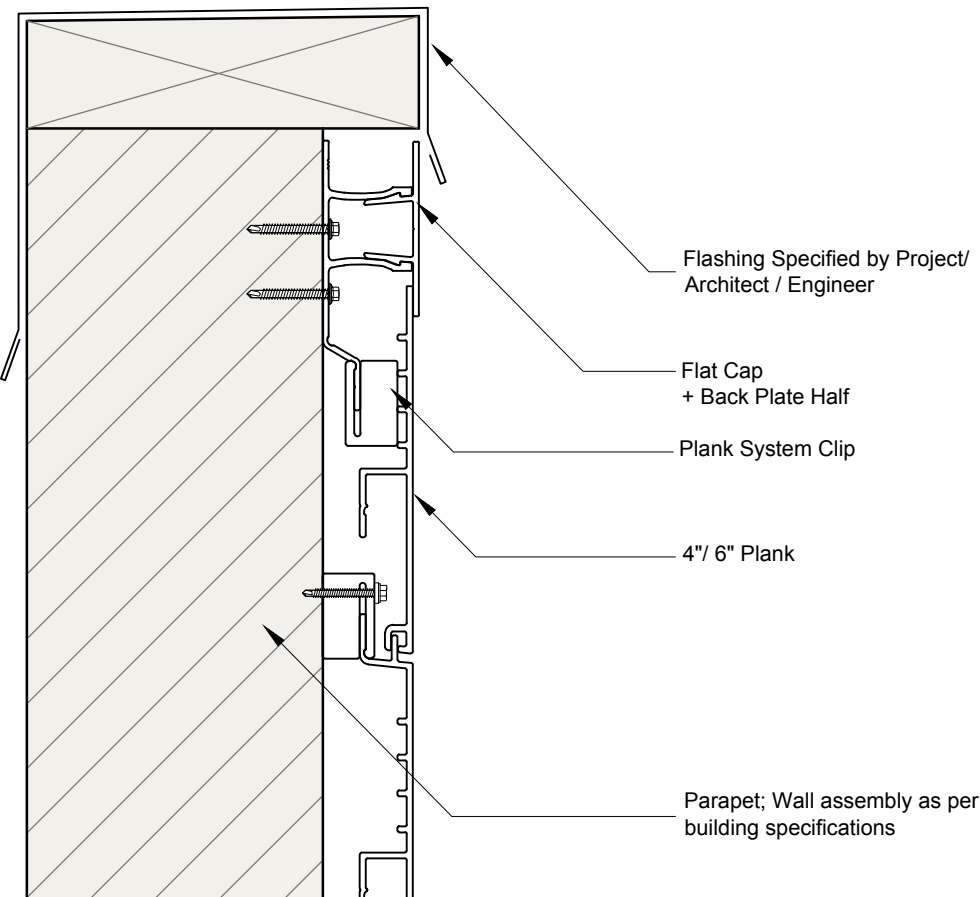
SCALE:
As noted

DRAWING NUMBER:

DATE:
20 Apr. 2020

21

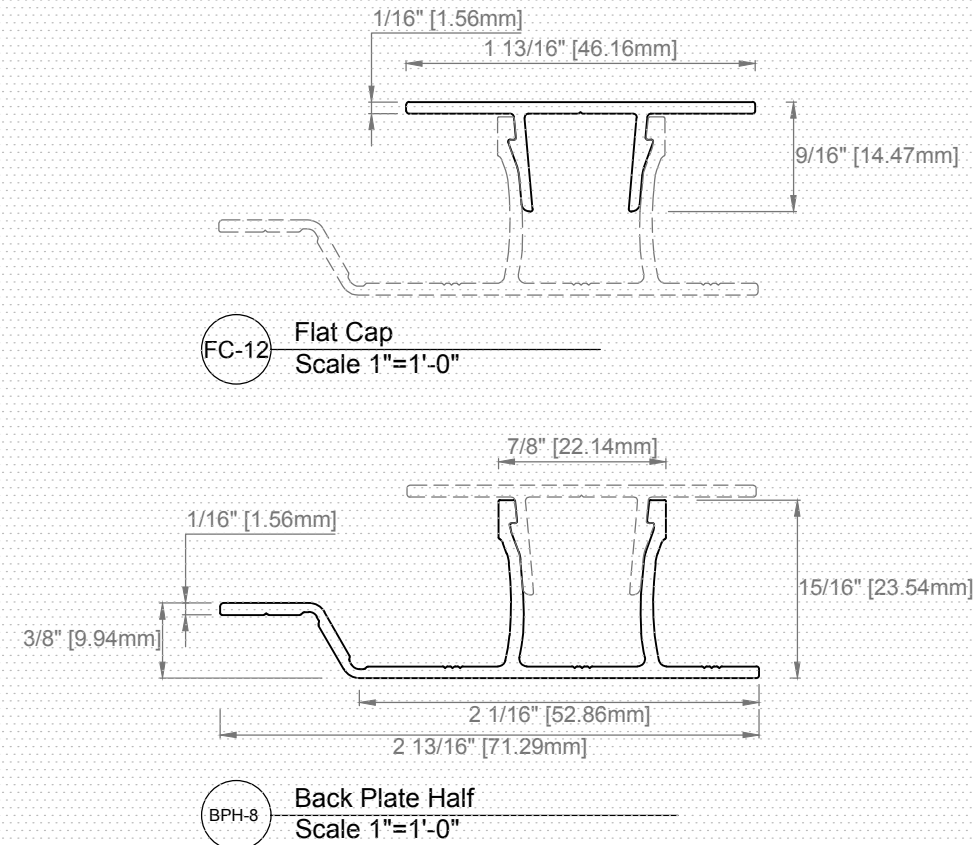




** Measure and cut horizontal Back Plate in 3.25" segments and install them every 16";
for vertical Back Plate allow approximately 2" gap from horizontal extrusions.

21 Top of Wall - Parapet
Scale 2"=1'-0"

EXTRUSIONS USED IN THE EXAMPLE



AL13® Architectural Systems
1278 Cliveden Avenue, V6M
6G4 Delta, BC - Canada

TEL. +1(604) 428-2513 MAIL
info@al13.com
www.al13.com

NOTE:

The contractor / builder must verify all dimensions on the job and report any discrepancy to the designer before proceeding with the work. All drawings and specifications are instruments of service and the copyright property of the designer and must be returned upon request.

AL13® Plank System Details

Plank System
4" Plank / 6" Plank

DESCRIPTION:
**GENERIC DETAIL
TOP OF WALL
PARAPET**

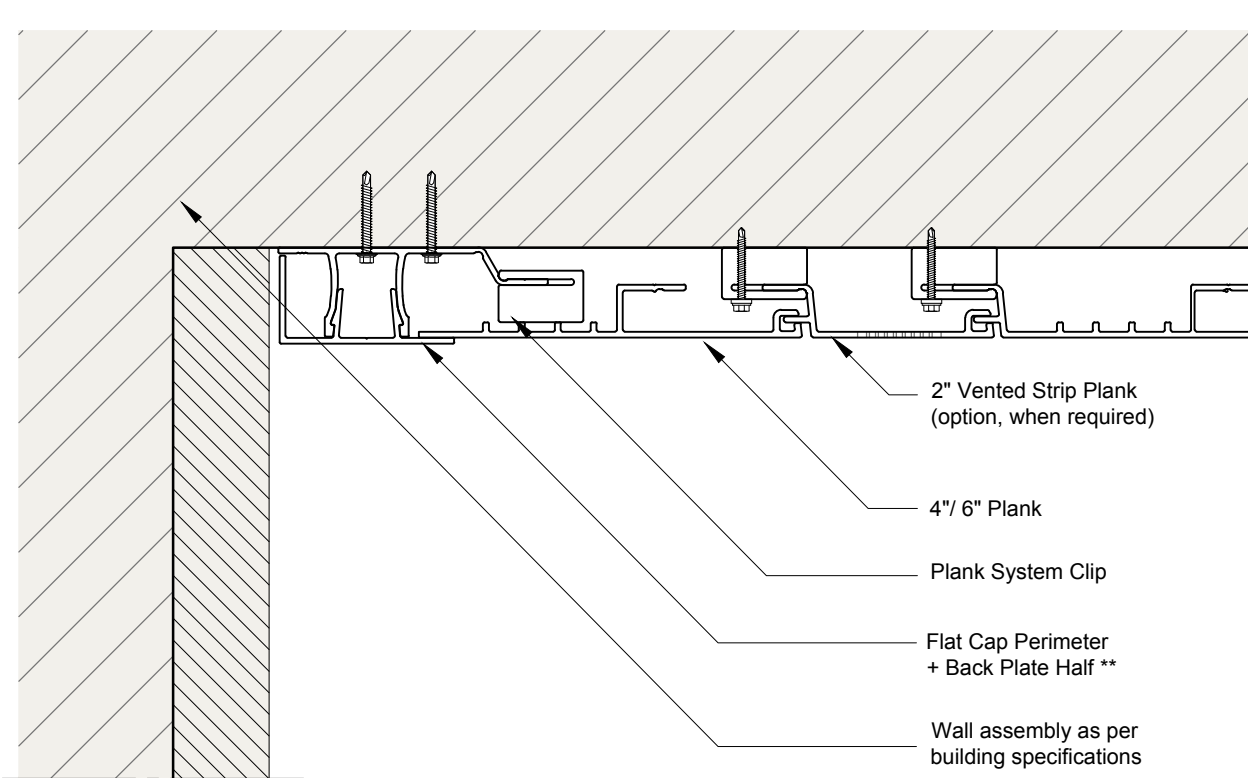
SCALE:
As noted

DRAWING
NUMBER:

DATE:
20 Apr. 2020

22

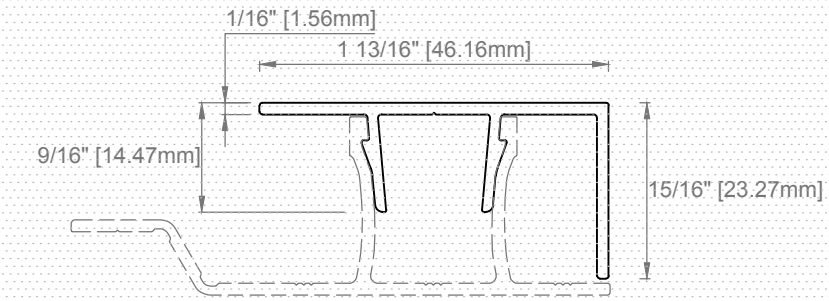




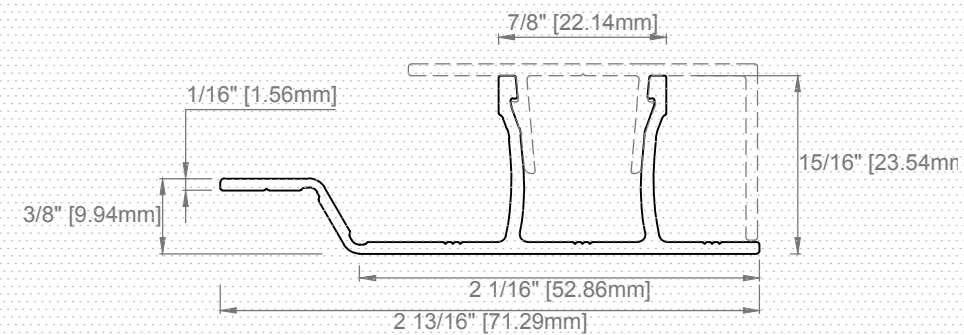
** Measure and cut horizontal Back Plate in 3.25\"/>

22 End of the Wall - Transition with Soffit
Scale 2\"/>

EXTRUSIONS USED IN THE EXAMPLE



FCP-12 Flat Cap Perimeter
Scale 1\"/>



BPH-8 Back Plate Half
Scale 1\"/>



AL13[®] Architectural Systems
1278 Cliveden Avenue, V6M
6G4 Delta, BC - Canada

TEL. +1(604) 428-2513 MAIL
info@al13.com
www.al13.com

NOTE:

The contractor / builder must verify all dimensions on the job and report any discrepancy to the designer before proceeding with the work. All drawings and specifications are instruments of service and the copyright property of the designer and must be returned upon request.

AL13[®] Plank System Details

Plank System
4\"/>



DESCRIPTION:
GENERIC DETAIL
END OF THE WALL
TRANSITION WITH
SOFFIT

SCALE:
As noted

DATE:
20 Apr. 2020

DRAWING
NUMBER:

23