

The logo for DAL13 architectural systems is positioned in the upper right corner of the image. It features the text "DAL13" in a large, bold, white sans-serif font, with "architectural" in a smaller, regular weight of the same font directly below it. The word "systems" is written in a smaller, italicized sans-serif font, also in white, and is positioned to the left of the word "architectural". A registered trademark symbol (®) is located at the end of the word "systems". The entire logo is set against a background of a modern building and a sunset sky.

DAL13 architectural  
systems®



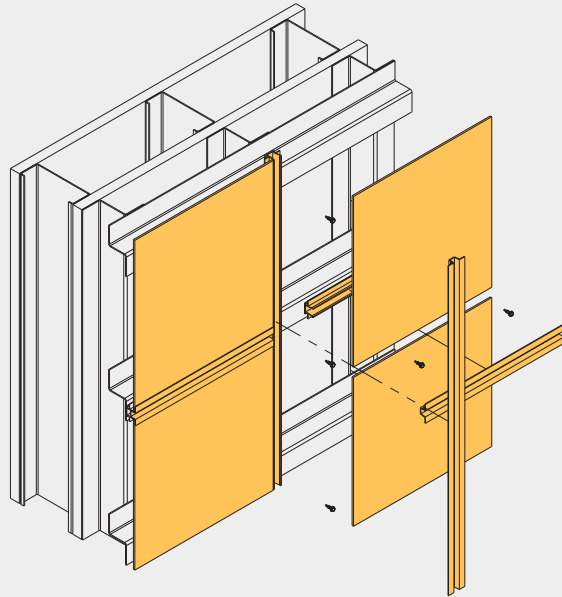




## ACM made accessible. Cut-to-fit on site for easy installation, saving time and money.

Using a patented process, our ACM panels are secured using AL13® system-compatible frame components. Seamless transitions, flexible design options, and on-site customization for easy installation.

[Learn more](#)



Walls



Soffits

### Where does the panel system go?

From walls, fascia, soffits, accents, on projects small to big, low to high - we've got you covered.

### Sizing

Standard 4mm ACM panel is 4' x 8'  
Custom sizes are available.

### Testing

AL13® panels are available in standard polyethylene and fire resistant mineral cores. AL13® system clips and extrusions work together to create a secure system with built-in moisture management. AL13® panels are third-party tested and listed with North American registrations covering wind, water, and fire.

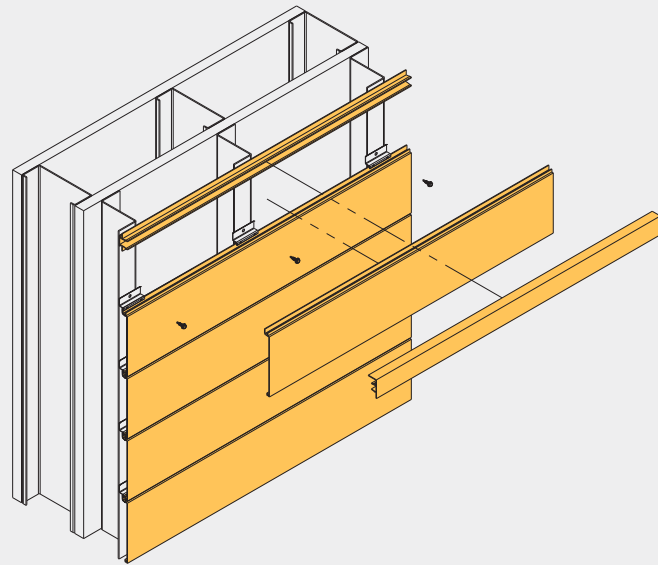
NFPA 285	AAMA 2605
ASTM E84	CAN/ULC-S134
ASTM E330	CAN/ULC-S102
AAMA 508	WUI - Ignition Resistant



## Get the look of wood, with the durability of metal. A proprietary system with built-in rain screen.

Modern profile design with 1/8" shadow line that matches real timber. Easy to handle and rigid 12' length planks allow a single installer to complete any project.

[Learn more](#)



Walls



Soffits

### Where does the plank system go?

From walls to soffits - achieve the beauty and warmth of wood without all the maintenance.

### Sizing

4" and 6" Plank  
2" Perforated Vent Strip

### Testing

AL13® planks are made of solid non-combustible extruded aluminum. AL13® system clips and extrusions work together to create a secure system with built-in moisture management. AL13® planks are third-party tested and listed with North American registrations covering wind, water, and fire.

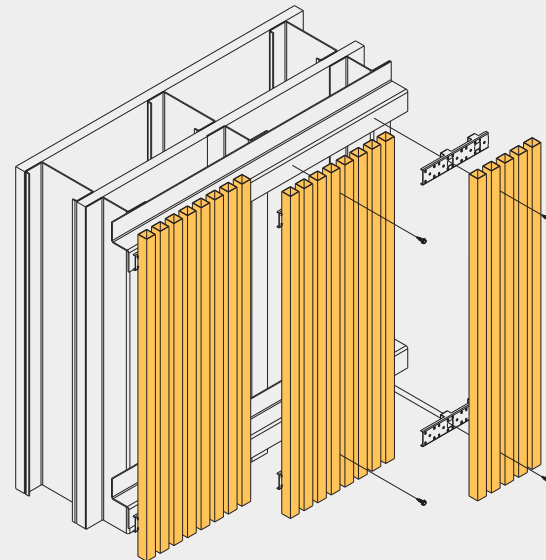
ASTM E136	AAMA 2604
ASTM E84	CAN/ULC-S114
AAMA 508	CAN/ULC-S102
ASTM E330	WUI - Non-combustible



## Innovative facades in wood look or solid colors. Intricate designs, simple installations.

Open joint batten system is cut to size, easily assembled on site, and secured directly to the substrate for both interior and exterior applications.

[Learn more](#)



Walls



Soffits



Ceilings



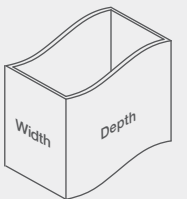
Screens

### Where does the batten system go?

Easy installation for walls, soffits, and ceilings to privacy screens, partitions, sunshades, and more - maximum impact with minimal maintenance.

### Sizing

Batten Width	Standard Section Depth			
1"	1"	2"	4"	5"
2"	2"	4"	6"	



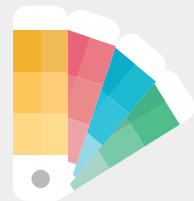
### Testing

AL13® Batten System is made of non-combustible materials such as aluminum tubes and G90 powder coated brackets, making them suitable for applications with strict fire regulations.



# Finishes

View more  
finish options at  
[AL13.com/colors](https://al13.com/colors)



Send us a physical sample or color code,  
and we can match it for no additional charge,  
submit requests to [samples@al13.com](mailto:samples@al13.com)

Request a sample



cobblestone battleship grey slate acorn grey galaxy black



silver metallic emery metallic pewter metallic charcoal metallic



View more



black walnut swiss pear



\*framing components are coated in a complementary solid color



steamclock driftwood gastown



seagrass carbon grey orca black



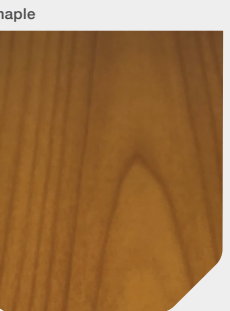
View more



douglas fir



dark douglas fir



maple



light european cherry



oak



cherry



western cedar



light national walnut

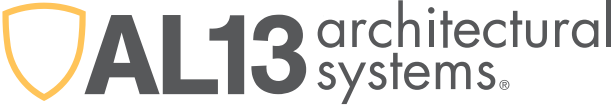


dark national walnut



View more





## About

AL13® was created by installers who were unable to access quality ACM cladding solutions for their clients. Since 2011, we've meticulously engineered proprietary systems to create the most seamless installation experience possible. The result is millions of square feet sold through a network of North America's largest building products distributors who understand first-hand the difference that AL13® makes for their customers.

Our systems are third-party tested and proven to resist sagging, peeling, corroding, fading, warping, rotting, or cracking, unlike traditional cladding and soffit applications.

AL13® products are made of coated aluminum, providing an outstanding low-maintenance finish that can endure the elements, significantly reducing lifetime cost when factoring in maintenance, repair, and replacement associated with most building envelope alternatives.

The comprehensive approach we've taken to design and engineer each product specific for our AL13® patented and proprietary systems means that we're able to deliver an end user experience that is truly greater than the sum of its parts.

## Your Project

Let us show you how AL13® can benefit your project. Submit your drawings at [www.AL13.com/estimates](http://www.AL13.com/estimates) for a takeoff and material estimate.

[Learn more](#)

## Ready?

Visit [www.AL13.com/GO](http://www.AL13.com/GO) to view a short video, access links to our gallery for inspiration, watch installation training videos, and obtain contact information for your local distributor or territory manager.

[Learn more](#)

## Contact

[www.AL13.com](http://www.AL13.com)  
[info@al13.com](mailto:info@al13.com)  
+1 855 438 2513

[Get in touch](#)

## Orders

Product orders  
submitted to:  
[orders@al13.com](mailto:orders@al13.com)

[Request estimate](#)

## Patented

 United States Patent  
and Trademark Office

 Canadian Intellectual  
Property Office

[Get more info at AL13.com/patents](http://AL13.com/patents)